

ZFP36L2 Antibody



PACO55838

Product Information

Size:

50ug

Reactivity:

Human, Rat

Source:

Rabbit

Isotype:

IgG

Applications:

ELISA, WB

Recommended dilutions:

ELISA:1:2000-1:10000, WB:1:500-1:5000

Protein Background:

Gene ID:

ZFP36L2

Uniprot

P47974

Synonyms:

mRNA decay activator protein ZFP36L2 (Butyrate response factor 2) (EGF-response factor 2) (ERF-2) (TPA-induced sequence 11d) (Zinc finger protein 36, C3H1 type-like 2) (ZFP36-like 2), ZFP36L2, BRF2 ERF2 RNF162C TIS11D

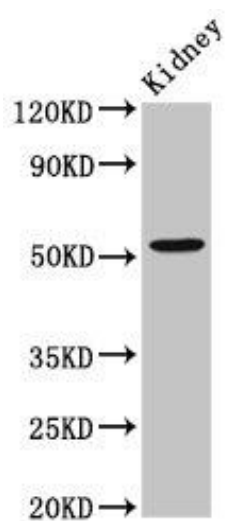
Immunogen:

Recombinant Human mRNA decay activator protein ZFP36L2 protein (219-321AA).

Storage:

Preservative: 0.03% Proclin 300. Constituents: 50% Glycerol, 0.01M PBS, pH 7.4

Product Images



Western Blot. Positive WB detected in: Rat kidney tissue. All lanes: ZFP36L2 antibody at 2.6 μ g/ml. Secondary. Goat polyclonal to rabbit IgG at 1/50000 dilution. Predicted band size: 52 kDa. Observed band size: 52 kDa.