

SLC22A25 Antibody



PACO55962

Product Information

Size:

50ug

Reactivity:

Human

Source:

Rabbit

Isotype:

IgG

Applications:

ELISA, WB, IHC, IF

Recommended dilutions:

ELISA:1:2000-1:10000, WB:1:500-1:5000,
IHC:1:100-1:300, IF:1:50-1:200

Protein Background:

integral component of plasma membrane, inorganic anion exchanger activity, sodium-independent organic anion transmembrane transporter activity, urate transmembrane transporter activity, sodium-independent organic anion transport, urate transport.

Gene ID:

SLC22A25

Uniprot

Q6T423

Synonyms:

Solute carrier family 22 member 25 (Organic anion transporter UST6), SLC22A25, UST6

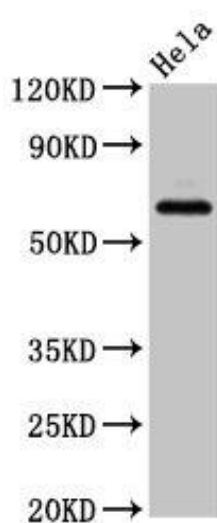
Immunogen:

Recombinant Human Solute carrier family 22 member 25 protein (31-145AA).

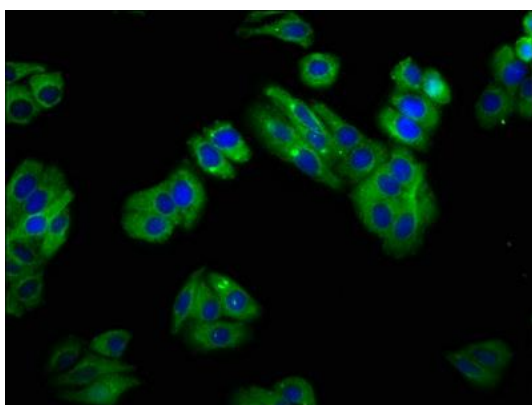
Storage:

Preservative: 0.03% Proclin 300. Constituents: 50% Glycerol, 0.01M PBS, pH 7.4

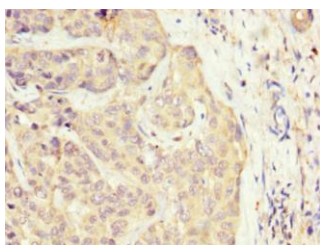
Product Images



Western Blot. Positive WB detected in: HeLa whole cell lysate. All lanes: SLC22A25 antibody at 6.8 μ g/ml. Secondary. Goat polyclonal to rabbit IgG at 1/50000 dilution. Predicted band size: 62 kDa. Observed band size: 62 kDa.



Immunofluorescence staining of HepG2 cells with PACO55962 at 1:100, counter-stained with DAPI. The cells were fixed in 4% formaldehyde, permeabilized using 0.2% Triton X-100 and blocked in 10% normal Goat Serum. The cells were then incubated with the antibody overnight at 4°C. The secondary antibody was Alexa Fluor 488-conjugated AffiniPure Goat Anti-Rabbit IgG(H+L).



IHC image of PACO55962 diluted at 1:300 and staining in paraffin-embedded human liver cancer performed on a Leica BondTM system. After dewaxing and hydration, antigen retrieval was mediated by high pressure in a citrate buffer (pH 6.0). Section was blocked with 10% normal goat serum 30min at RT. Then primary antibody (1% BSA) was incubated at 4°C overnight. The primary is detected by a biotinylated secondary antibody and visualized using an HRP conjugated SP system.