

# LGI2 Antibody



PACO56034

---

## Product Information

**Size:**

50ug

**Reactivity:**

Human

**Source:**

Rabbit

**Isotype:**

IgG

**Applications:**

ELISA, IHC

**Recommended dilutions:**

ELISA:1:2000-1:10000, IHC:1:20-1:200

**Protein Background:**

extracellular region.

**Gene ID:**

LGI2

**Uniprot**

Q8N0V4

**Synonyms:**

Leucine-rich repeat LGI family member 2 (LGI1-like protein 2) (Leucine-rich glioma-inactivated protein 2), LGI2, KIAA1916 LGIL2

**Immunogen:**

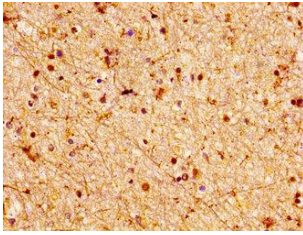
Recombinant Human Leucine-rich repeat LGI family member 2 protein (194-310AA).

**Storage:**

Preservative: 0.03% Proclin 300. Constituents: 50% Glycerol, 0.01M PBS, pH 7.4

## Product Images

---



IHC image of PACO56034 diluted at 1:100 and staining in paraffin-embedded human brain tissue performed on a Leica Bond™ system. After dewaxing and hydration, antigen retrieval was mediated by high pressure in a citrate buffer (pH 6.0). Section was blocked with 10% normal goat serum 30min at RT. Then primary antibody (1% BSA) was incubated at 4°C overnight. The primary is detected by a biotinylated secondary antibody and visualized using an HRP conjugated SP system.