

PACO56150

Product Information

Size:

50ug

Reactivity:

Human, Rat

Source:

Rabbit

Isotype:

IgG

Applications:

ELISA, WB, IHC, IF

Recommended dilutions:

ELISA:1:2000-1:10000, WB:1:500-1:5000,
IHC:1:300-1:500, IF:1:50-1:200

Protein Background:

Involved in the maintenance of Golgi structure by interacting with giantin, affecting protein transport between the endoplasmic reticulum and Golgi. Involved in hormone-induced steroid biosynthesis in testicular Leydig cells.

Gene ID:

ACBD3

Uniprot

Q9H3P7

Synonyms:

Golgi resident protein GCP60 (Acyl-CoA-binding domain-containing protein 3) (Golgi complex-associated protein 1) (GOCAP1) (Golgi phosphoprotein 1) (GOLPH1) (PBR- and PKA-associated protein 7) (Peripheral benzodiazepine receptor-associated protein PAP7) [Cleaved into: Golgi resident protein GCP60, N-terminally processed], ACBD3, GCP60 GOCAP1 GOLPH1

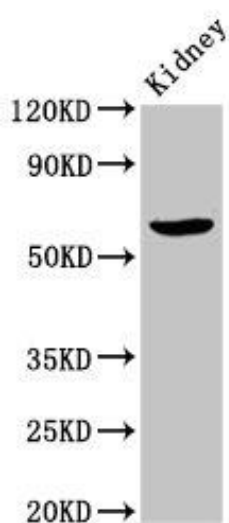
Immunogen:

Recombinant Human Golgi resident protein GCP60 protein (263-366AA).

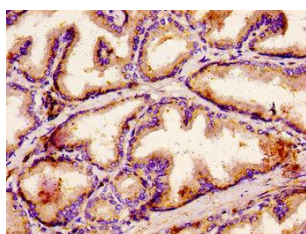
Storage:

Preservative: 0.03% Proclin 300. Constituents: 50% Glycerol, 0.01M PBS, pH 7.4

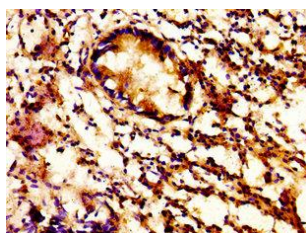
Product Images



Western Blot. Positive WB detected in: Rat kidney tissue. All lanes: ACBD3 antibody at 7 μ g/ml. Secondary. Goat polyclonal to rabbit IgG at 1/50000 dilution. Predicted band size: 61 kDa. Observed band size: 61 kDa.



IHC image of PACO56150 diluted at 1:500 and staining in paraffin-embedded human prostate tissue performed on a Leica BondTM system. After dewaxing and hydration, antigen retrieval was mediated by high pressure in a citrate buffer (pH 6.0). Section was blocked with 10% normal goat serum 30min at RT. Then primary antibody (1% BSA) was incubated at 4 $^{\circ}$ C overnight. The primary is detected by a biotinylated secondary antibody and visualized using an HRP conjugated ABC system.



IHC image of PACO56150 diluted at 1:500 and staining in paraffin-embedded human appendix tissue performed on a Leica BondTM system. After dewaxing and hydration, antigen retrieval was mediated by high pressure in a citrate buffer (pH 6.0). Section was blocked with 10% normal goat serum 30min at RT. Then primary antibody (1% BSA) was incubated at 4 $^{\circ}$ C overnight. The primary is detected by a biotinylated secondary antibody and visualized using an HRP conjugated SP system.