

PACO56166

Product Information

Size:

50ug

Reactivity:

Human

Source:

Rabbit

Isotype:

IgG

Applications:

ELISA, WB, IHC

Recommended dilutions:

ELISA:1:2000-1:10000, WB:1:500-1:5000,
IHC:1:200-1:500

Protein Background:

Antagonizes the function of BMP4 by binding to it and preventing its interaction with receptors. Alters the fate commitment of neural stem cells from gliogenesis to neurogenesis. Contributes to neuronal differentiation of neural stem cells in the brain by preventing the adoption of a glial fate. May play a crucial role in dorsoventral axis formation. May play a role in embryonic bone formation. May also play an important role in regulating retinal angiogenesis through modulation of BMP4 actions in endothelial cells. Plays a role during anterior segment eye development.

Gene ID:

CHRDL1

Uniprot

Q9BU40

Synonyms:

Chordin-like protein 1 (Neuralin-1) (Neurogenesin-1) (Ventroptin), CHRDL1, NRLN1

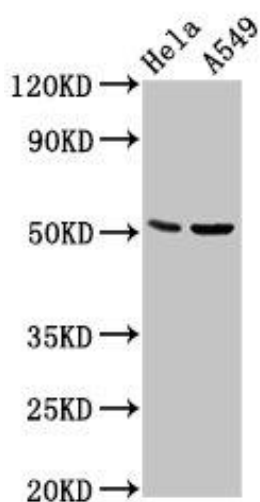
Immunogen:

Recombinant Human Chordin-like protein 1 protein (92-237AA).

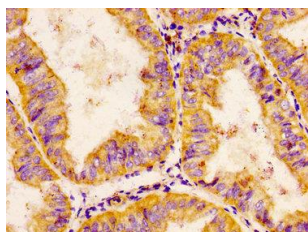
Storage:

Preservative: 0.03% Proclin 300. Constituents: 50% Glycerol, 0.01M PBS, pH 7.4

Product Images



Western Blot. Positive WB detected in: HeLa whole cell lysate, A549 whole cell lysate. All lanes: CHRDL1 antibody at 5.7 μ g/ml. Secondary: Goat polyclonal to rabbit IgG at 1/50000 dilution. Predicted band size: 52, 44, 53 kDa. Observed band size: 52 kDa.



IHC image of PACO56166 diluted at 1:200 and staining in paraffin-embedded human endometrial cancer performed on a Leica BondTM system. After dewaxing and hydration, antigen retrieval was mediated by high pressure in a citrate buffer (pH 6.0). Section was blocked with 10% normal goat serum 30min at RT. Then primary antibody (1% BSA) was incubated at 4 $^{\circ}$ C overnight. The primary is detected by a biotinylated secondary antibody and visualized using an HRP conjugated SP system.