

FOXE3 Antibody



PACO56394

Product Information

Size:

50ug

Reactivity:

Human, Rat, Mouse

Source:

Rabbit

Isotype:

IgG

Applications:

ELISA, WB, IF

Recommended dilutions:

ELISA:1:2000-1:10000, WB:1:500-1:5000,
IF:1:50-1:200

Protein Background:

Transcription factor that controls lens epithelial cell growth through regulation of proliferation, apoptosis and cell cycle. During lens development, controls the ratio of the lens fiber cells to the cells of the anterior lens epithelium by regulating the rate of proliferation and differentiation. Controls lens vesicle closure and subsequent separation of the lens vesicle from ectoderm. Controls the expression of DNAJB1 in a pathway that is crucial for the development of the anterior segment of the eye.

Gene ID:

FOXE3

Uniprot

Q13461

Synonyms:

Forkhead box protein E3 (Forkhead-related protein FKHL12) (Forkhead-related transcription factor 8) (FREAC-8), FOXE3, FKHL12 FREAC8

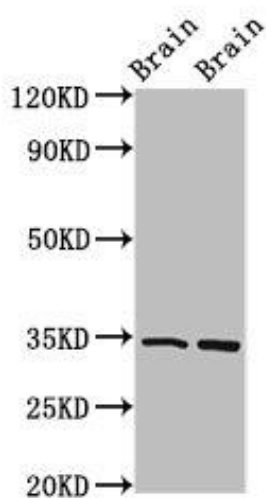
Immunogen:

Recombinant Human Forkhead box protein E3 protein (4-74AA).

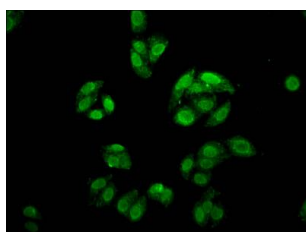
Storage:

Preservative: 0.03% Proclin 300. Constituents: 50% Glycerol, 0.01M PBS, pH 7.4

Product Images



Western Blot. Positive WB detected in: Mouse brain tissue, Rat brain tissue. All lanes: FOXE3 antibody at 4 μ g/ml. Secondary: Goat polyclonal to rabbit IgG at 1/50000 dilution. Predicted band size: 34 kDa. Observed band size: 34 kDa.



Immunofluorescence staining of HepG2 cells with PACO56394 at 1:166, counter-stained with DAPI. The cells were fixed in 4% formaldehyde, permeabilized using 0.2% Triton X-100 and blocked in 10% normal Goat Serum. The cells were then incubated with the antibody overnight at 4°C. The secondary antibody was Alexa Fluor 488-conjugated AffiniPure Goat Anti-Rabbit IgG(H+L).