

PACO56474

Product Information

Size:

50ug

Reactivity:

Human, Rat, Mouse

Source:

Rabbit

Isotype:

IgG

Applications:

ELISA, WB, IHC, IF

Recommended dilutions:

ELISA:1:2000-1:10000, WB:1:500-1:5000,
IHC:1:200-1:500, IF:1:50-1:200

Protein Background:

Calcium-dependent mitochondrial solute carrier. Mediates the reversible, electroneutral exchange of Mg-ATP or Mg-ADP against phosphate ions, catalyzing the net uptake or efflux of adenine nucleotides across the mitochondrial inner membrane. Nucleotide transport is inactive when cytosolic calcium levels are low, and is activated by an increase in cytosolic calcium levels. May play a role in protecting cells against oxidative stress-induced cell death, probably by promoting the formation of calcium-phosphate precipitates in the mitochondrial matrix, and thereby buffering calcium levels in the mitochondrial matrix.

Gene ID:

SLC25A24

Uniprot

Q6NUK1

Synonyms:

Calcium-binding mitochondrial carrier protein SCaMC-1 (Mitochondrial ATP-Mg/Pi carrier protein 1) (Mitochondrial Ca²⁺-dependent solute carrier protein 1) (Small calcium-binding mitochondrial carrier protein 1) (Solute carrier family 25 member 24), SLC25A24, APC1 MCSC1 SCAMC1

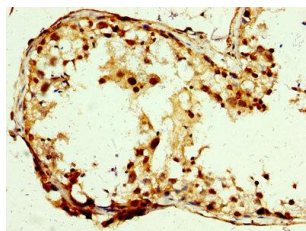
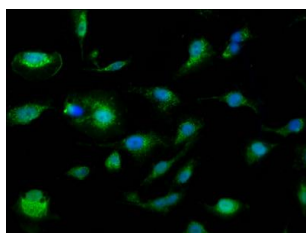
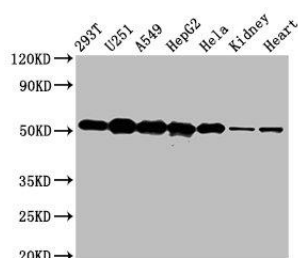
Immunogen:

Recombinant Human Calcium-binding mitochondrial carrier protein SCaMC-1 protein (1-197AA).

Storage:

Preservative: 0.03% Proclin 300. Constituents: 50% Glycerol, 0.01M PBS, pH 7.4

Product Images



Western Blot. Positive WB detected in: 293T whole cell lysate, U251 whole cell lysate, A549 whole cell lysate, HepG2 whole cell lysate, HeLa whole cell lysate, Rat kidney tissue, Mouse heart tissue. All lanes: SLC25A24 antibody at 5µg/ml. Secondary. Goat polyclonal to rabbit IgG at 1/50000 dilution. Predicted band size: 54, 52 kDa. Observed band size: 54 kDa.

Immunofluorescence staining of U251 cells with PACO56474 at 1:110, counter-stained with DAPI. The cells were fixed in 4% formaldehyde, permeabilized using 0.2% Triton X-100 and blocked in 10% normal Goat Serum. The cells were then incubated with the antibody overnight at 4°C. The secondary antibody was Alexa Fluor 488-conjugated AffiniPure Goat Anti-Rabbit IgG(H+L).

IHC image of PACO56474 diluted at 1:250 and staining in paraffin-embedded human testis tissue performed on a Leica BondTM system. After dewaxing and hydration, antigen retrieval was mediated by high pressure in a citrate buffer (pH 6.0). Section was blocked with 10% normal goat serum 30min at RT. Then primary antibody (1% BSA) was incubated at 4°C overnight. The primary is detected by a biotinylated secondary antibody and visualized using an HRP conjugated SP system.