

# Phospho-HIST1H3A (S10) Antibody



PACO56570

---

## Product Information

**Size:**

50ul

**Reactivity:**

Human

**Source:**

Rabbit

**Isotype:**

IgG

**Applications:**

ELISA, WB, ICC, IP

**Recommended dilutions:**

ELISA:1:2000-1:10000, WB:1:200-1:2000,  
ICC:1:20-1:200, IP:1:200-1:2000

**Protein Background:**

Core component of nucleosome. Nucleosomes wrap and compact DNA into chromatin, limiting DNA accessibility to the cellular machineries which require DNA as a template. Histones thereby play a central role in transcription regulation, DNA repair, DNA replication and chromosomal stability. DNA accessibility is regulated via a complex set of post-translational modifications of histones, also called histone code, and nucleosome remodeling.

**Gene ID:**

HIST1H3A

**Uniprot**

P68431

**Synonyms:**

Histone H3.1 (Histone H3/a) (Histone H3/b) (Histone H3/c) (Histone H3/d) (Histone H3/f) (Histone H3/h) (Histone H3/i) (Histone H3/j) (Histone H3/k) (Histone H3/l), HIST1H3A; HIST1H3B; HIST1H3C; HIST1H3D; HIST1H3E; HIST1H3F; HIST1H3G; HIST1H3H; HIST1H3I; HIST1H3J, H3FA; H3FL; H3FC; H3FB; H3FD; H3FI; H3FH; H3FK; H3FF; H3FJ

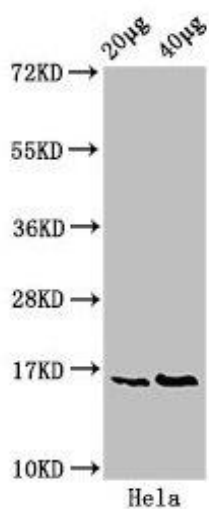
**Immunogen:**

Peptide sequence around site of Phospho-Ser (10) derived from Human Histone H3.1.

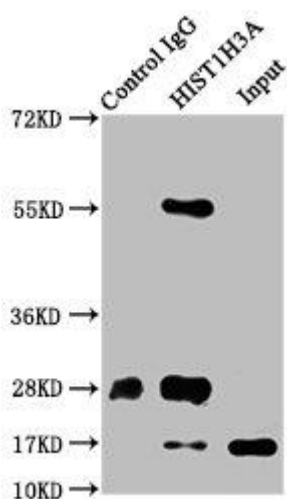
**Storage:**

Preservative: 0.03% Proclin 300. Constituents: 50% Glycerol, 0.01M PBS, pH 7.4

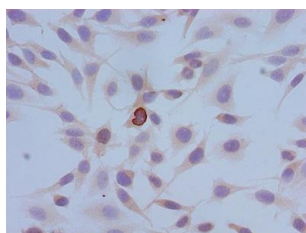
## Product Images



Western Blot. Positive WB detected in: HeLa whole cell lysate. All lanes: HIST1H3A antibody at 0.4µg/ml. Secondary. Goat polyclonal to rabbit IgG at 1/50000 dilution. Predicted band size: 16 kDa. Observed band size: 16 kDa.



Immunoprecipitating HIST1H3A in HeLa whole cell lysate. Lane 1: Rabbit control IgG instead of PACO56570 in HeLa whole cell lysate. For western blotting, a HRP-conjugated Protein G antibody was used as the secondary antibody (1/2000). Lane 2: PACO56570 (5µg) + HeLa whole cell lysate (500µg). Lane 3: HeLa whole cell lysate (20µg).



Immunocytochemistry analysis of HeLa cells using PACO56570 at dilution of 1:100.