

HIST1H1E (Ab-63) Antibody



PACO56600

Product Information

Size:

50ul

Reactivity:

Human

Source:

Rabbit

Isotype:

IgG

Applications:

ELISA, IHC

Recommended dilutions:

ELISA:1:2000-1:10000, IHC:1:20-1:200

Protein Background:

Histone H1 protein binds to linker DNA between nucleosomes forming the macromolecular structure known as the chromatin fiber. Histones H1 are necessary for the condensation of nucleosome chains into higher-order structured fibers. Acts also as a regulator of individual gene transcription through chromatin remodeling, nucleosome spacing and DNA methylation.

Gene ID:

HIST1H1E

Uniprot

P10412

Synonyms:

Histone H1.4 (Histone H1b) (Histone H1s-4), HIST1H1E, H1F4

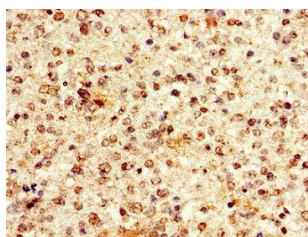
Immunogen:

Peptide sequence around site of Lys (63) derived from Human Histone H1.4.

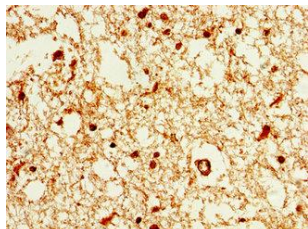
Storage:

Preservative: 0.03% Proclin 300. Constituents: 50% Glycerol, 0.01M PBS, pH 7.4

Product Images



Immunohistochemistry of paraffin-embedded human glioma using PACO5660 at dilution of 1:100.



Immunohistochemistry of paraffin-embedded human brain tissue using PACO5660 at dilution of 1:100.