

HIST1H1B (Ab-16) Antibody



PACO56609

Product Information

Size:

50ul

Reactivity:

Human

Source:

Rabbit

Isotype:

IgG

Applications:

ELISA, WB, IHC

Recommended dilutions:

ELISA:1:2000-1:10000, WB:1:50-1:500,
IHC:1:20-1:200

Protein Background:

Histone H1 protein binds to linker DNA between nucleosomes forming the macromolecular structure known as the chromatin fiber. Histones H1 are necessary for the condensation of nucleosome chains into higher-order structured fibers. Acts also as a regulator of individual gene transcription through chromatin remodeling, nucleosome spacing and DNA methylation.

Gene ID:

HIST1H1B

Uniprot

P16401

Synonyms:

Histone H1.5 (Histone H1a) (Histone H1b) (Histone H1s-3), HIST1H1B, H1F5

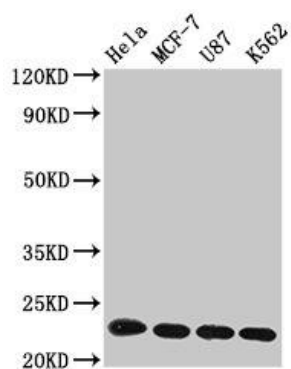
Immunogen:

Peptide sequence around site of Lys (16) derived from Human Histone H1.5.

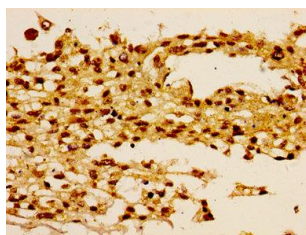
Storage:

Preservative: 0.03% Proclin 300. Constituents: 50% Glycerol, 0.01M PBS, pH 7.4

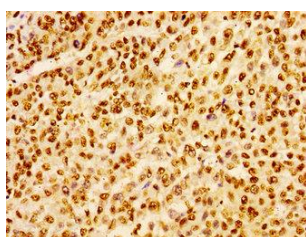
Product Images



Western Blot. Positive WB detected in: HeLa whole cell lysate, MCF-7 whole cell lysate, U87 whole cell lysate, K562 whole cell lysate. All lanes: HIST1H1B antibody at 1 μ g/ml. Secondary. Goat polyclonal to rabbit IgG at 1/50000 dilution. Predicted band size: 23 kDa. Observed band size: 23 kDa.



Immunohistochemistry of paraffin-embedded human melanoma using PACO56609 at dilution of 1:100.



Immunohistochemistry of paraffin-embedded human colon cancer using PACO56609 at dilution of 1:100.