

# HIST1H1B (Ab-137) Antibody



PACO56611

---

## Product Information

**Size:**

50ul

**Reactivity:**

Human

**Source:**

Rabbit

**Isotype:**

IgG

**Applications:**

ELISA, WB, IHC

**Recommended dilutions:**

ELISA:1:2000-1:10000, WB:1:100-1:1000,  
IHC:1:20-1:200

**Protein Background:**

Histone H1 protein binds to linker DNA between nucleosomes forming the macromolecular structure known as the chromatin fiber. Histones H1 are necessary for the condensation of nucleosome chains into higher-order structured fibers. Acts also as a regulator of individual gene transcription through chromatin remodeling, nucleosome spacing and DNA methylation.

**Gene ID:**

HIST1H1B

**Uniprot**

P16401

**Synonyms:**

Histone H1.5 (Histone H1a) (Histone H1b) (Histone H1s-3), HIST1H1B, H1F5

**Immunogen:**

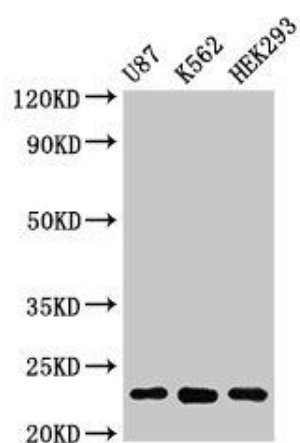
Peptide sequence around site of Thr (137) derived from Human Histone H1.5.

**Storage:**

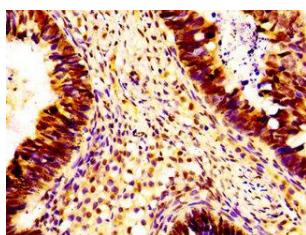
Preservative: 0.03% Proclin 300. Constituents: 50% Glycerol, 0.01M PBS, pH 7.4

## Product Images

---



Western Blot. Positive WB detected in: U87 whole cell lysate, K562 whole cell lysate, HEK293 whole cell lysate. All lanes: HIST1H1B antibody at 1 $\mu$ g/ml. Secondary. Goat polyclonal to rabbit IgG at 1/50000 dilution. Predicted band size: 23 kDa. Observed band size: 23 kDa.



Immunohistochemistry of paraffin-embedded human ovarian cancer using PACO56611 at dilution of 1:100.