

# Phospho-HIST1H1E (T3) Antibody



PACO56618

---

## Product Information

**Size:**

50ul

**Reactivity:**

Human

**Source:**

Rabbit

**Isotype:**

IgG

**Applications:**

ELISA, IF

**Recommended dilutions:**

ELISA:1:2000-1:10000, IF:1:50-1:200

**Protein Background:**

Histone H1 protein binds to linker DNA between nucleosomes forming the macromolecular structure known as the chromatin fiber. Histones H1 are necessary for the condensation of nucleosome chains into higher-order structured fibers. Acts also as a regulator of individual gene transcription through chromatin remodeling, nucleosome spacing and DNA methylation.

**Gene ID:**

HIST1H1E

**Uniprot**

P10412

**Synonyms:**

Histone H1.4 (Histone H1b) (Histone H1s-4), HIST1H1E, H1F4

**Immunogen:**

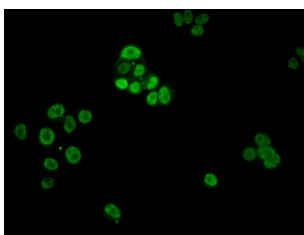
Peptide sequence around site of Phospho-Thr (3) derived from Human Histone H1.4.

**Storage:**

Preservative: 0.03% Proclin 300. Constituents: 50% Glycerol, 0.01M PBS, pH 7.4

## Product Images

---



Immunofluorescent analysis of MCF-7 cells using PACO56618 at dilution of 1:100 and Alexa Fluor 488-conjugated AffiniPure Goat Anti-Rabbit IgG(H+L).