

HIST1H1E (Ab-16) Antibody



PACO56621

Product Information

Size:

50ul

Reactivity:

Human

Source:

Rabbit

Isotype:

IgG

Applications:

ELISA, WB, IHC, IF

Recommended dilutions:

ELISA:1:2000-1:10000, WB:1:100-1:1000,
IHC:1:20-1:200, IF:1:50-1:200

Protein Background:

Histone H1 protein binds to linker DNA between nucleosomes forming the macromolecular structure known as the chromatin fiber. Histones H1 are necessary for the condensation of nucleosome chains into higher-order structured fibers. Acts also as a regulator of individual gene transcription through chromatin remodeling, nucleosome spacing and DNA methylation.

Gene ID:

HIST1H1E

Uniprot

P10412

Synonyms:

Histone H1.4 (Histone H1b) (Histone H1s-4), HIST1H1E, H1F4

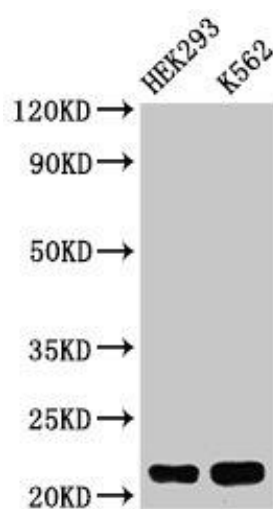
Immunogen:

Peptide sequence around site of Lys (16) derived from Human Histone H1.4.

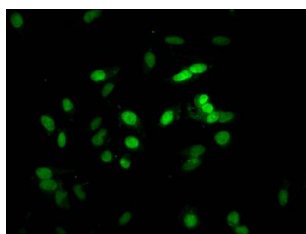
Storage:

Preservative: 0.03% Proclin 300. Constituents: 50% Glycerol, 0.01M PBS, pH 7.4

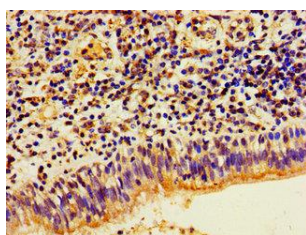
Product Images



Western Blot. Positive WB detected in: HEK293 whole cell lysate, K562 whole cell lysate. All lanes: HIST1H1E antibody at 0.5 μ g/ml. Secondary. Goat polyclonal to rabbit IgG at 1/50000 dilution. Predicted band size: 22 kDa. Observed band size: 22 kDa.



Immunofluorescent analysis of HeLa cells using PACO56621 at dilution of 1:100 and Alexa Fluor 488-conjugated AffiniPure Goat Anti-Rabbit IgG(H+L).



Immunohistochemistry of paraffin-embedded human lung cancer using PACO56621 at dilution of 1:100.