

# HIST1H1C (Ab-96) Antibody



PACO56633

---

## Product Information

**Size:**

50ul

**Reactivity:**

Human

**Source:**

Rabbit

**Isotype:**

IgG

**Applications:**

ELISA, WB, IF

**Recommended dilutions:**

ELISA:1:2000-1:10000, WB:1:100-1:1000,  
IF:1:50-1:200

**Protein Background:**

Histone H1 protein binds to linker DNA between nucleosomes forming the macromolecular structure known as the chromatin fiber. Histones H1 are necessary for the condensation of nucleosome chains into higher-order structured fibers. Acts also as a regulator of individual gene transcription through chromatin remodeling, nucleosome spacing and DNA methylation.

**Gene ID:**

HIST1H1C

**Uniprot**

P16403

**Synonyms:**

Histone H1.2 (Histone H1c) (Histone H1d) (Histone H1s-1), HIST1H1C, H1F2

**Immunogen:**

Peptide sequence around site of Lys (96) derived from Human Histone H1.2.

**Storage:**

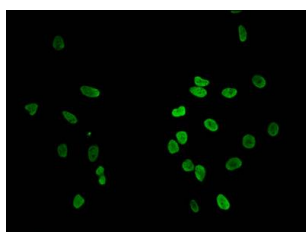
Preservative: 0.03% Proclin 300. Constituents: 50% Glycerol, 0.01M PBS, pH 7.4

## Product Images

---



Western Blot. Positive WB detected in: Jurkat whole cell lysate. All lanes: HIST1H1C antibody at 1 $\mu$ g/ml. Secondary. Goat polyclonal to rabbit IgG at 1/50000 dilution. Predicted band size: 22 kDa. Observed band size: 22 kDa.



Immunofluorescent analysis of HeLa cells using PACO56633 at dilution of 1:100 and Alexa Fluor 488-conjugated AffiniPure Goat Anti-Rabbit IgG(H+L).