

PACO56744

---

## Product Information

**Size:**

50ug

**Reactivity:**

Human

**Source:**

Rabbit

**Isotype:**

IgG

**Applications:**

ELISA, IHC

**Recommended dilutions:**

ELISA:1:2000-1:10000, IHC:1:200-1:500

**Protein Background:**

T-cell surface glycoprotein CD1e, soluble binds diacetylated lipids, including phosphatidyl inositides and diacylated sulfoglycolipids, and is required for the presentation of glycolipid antigens on the cell surface. The membrane-associated form is not active.

**Gene ID:**

CD1E

**Uniprot**

P15812

**Synonyms:**

T-cell surface glycoprotein CD1e, membrane-associated (hCD1e) (R2G1) (CD antigen CD1e) [Cleaved into: T-cell surface glycoprotein CD1e, soluble (sCD1e)], CD1E

**Immunogen:**

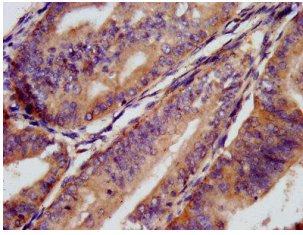
Recombinant Human T-cell surface glycoprotein CD1e, membrane-associated protein (198-294AA).

**Storage:**

Preservative: 0.03% Proclin 300. Constituents: 50% Glycerol, 0.01M PBS, pH 7.4

## Product Images

---



IHC image of PACO56744 diluted at 1:300 and staining in paraffin-embedded human endometrial cancer performed on a Leica Bond™ system. After dewaxing and hydration, antigen retrieval was mediated by high pressure in a citrate buffer (pH 6.0). Section was blocked with 10% normal goat serum 30min at RT. Then primary antibody (1% BSA) was incubated at 4°C overnight. The primary is detected by a biotinylated secondary antibody and visualized using an HRP conjugated SP system.