

# PHOX2A Antibody



PACO56924

---

## Product Information

**Size:**

50ug

**Reactivity:**

Human

**Source:**

Rabbit

**Isotype:**

IgG

**Applications:**

ELISA, IHC

**Recommended dilutions:**

ELISA:1:2000-1:10000, IHC:1:200-1:500

**Protein Background:**

May be involved in regulating the specificity of expression of the catecholamine biosynthetic genes. Acts as a transcription activator/factor. Could maintain the noradrenergic phenotype.

**Gene ID:**

PHOX2A

**Uniprot**

O14813

**Synonyms:**

Paired mesoderm homeobox protein 2A (ARIX1 homeodomain protein) (Aristaless homeobox protein homolog) (Paired-like homeobox 2A), PHOX2A, ARIX PMX2A

**Immunogen:**

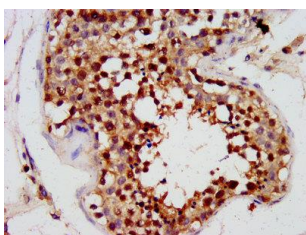
Recombinant Human Paired mesoderm homeobox protein 2A protein (150-264AA).

**Storage:**

Preservative: 0.03% Proclin 300. Constituents: 50% Glycerol, 0.01M PBS, pH 7.4

## Product Images

---



IHC image of PACO56924 diluted at 1:300 and staining in paraffin-embedded human testis tissue performed on a Leica Bond™ system.