

# SCAMP1 Antibody



PACO56968

---

## Product Information

**Size:**

50ug

**Reactivity:**

Human, Rat

**Source:**

Rabbit

**Isotype:**

IgG

**Applications:**

ELISA, WB, IHC

**Recommended dilutions:**

ELISA:1:2000-1:10000, WB:1:500-1:5000,  
IHC:1:200-1:500

**Protein Background:**

Functions in post-Golgi recycling pathways. Acts as a recycling carrier to the cell surface.

**Gene ID:**

SCAMP1

**Uniprot**

O15126

**Synonyms:**

Secretory carrier-associated membrane protein 1 (Secretory carrier membrane protein 1), SCAMP1, SCAMP

**Immunogen:**

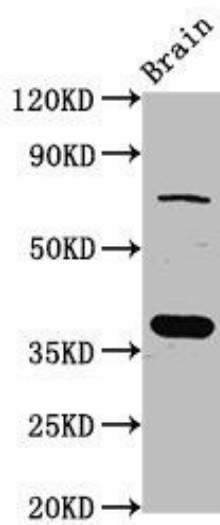
Recombinant Human Secretory carrier-associated membrane protein 1 protein (2-134AA).

**Storage:**

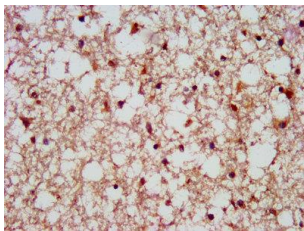
Preservative: 0.03% Proclin 300. Constituents: 50% Glycerol, 0.01M PBS, pH 7.4

## Product Images

---



Western Blot. Positive WB detected in: Rat brain tissue. All lanes: SCAMP1 antibody at 4 $\mu$ g/ml. Secondary. Goat polyclonal to rabbit IgG at 1/50000 dilution. Predicted band size: 38, 19 kDa. Observed band size: 38 kDa.



IHC image of PACO56968 diluted at 1:500 and staining in paraffin-embedded human brain tissue performed on a Leica Bond<sup>TM</sup> system.