

PACO57024

---

## Product Information

**Size:**

50ug

**Reactivity:**

Human, Rat

**Source:**

Rabbit

**Isotype:**

IgG

**Applications:**

ELISA, WB, IHC, IF

**Recommended dilutions:**

ELISA:1:2000-1:10000, WB:1:500-1:5000,  
IHC:1:200-1:500, IF:1:50-1:200

**Protein Background:**

May act as a physical homophilic interaction molecule between intestinal epithelial cells (IECs) and intraepithelial lymphocytes (IELs) at the mucosal epithelium for providing immunological barrier as a first line of defense against mucosal infection. Plays a role in embryonic stem cells proliferation and differentiation. Up-regulates the expression of FABP5, MYC and cyclins A and E.

**Gene ID:**

EPCAM

**Uniprot**

P16422

**Synonyms:**

Epithelial cell adhesion molecule (Ep-CAM) (Adenocarcinoma-associated antigen) (Cell surface glycoprotein Trop-1) (Epithelial cell surface antigen) (Epithelial glycoprotein) (EGP) (Epithelial glycoprotein 314) (EGP314) (hEGP314) (KS 1/4 antigen) (KSA) (Major gastrointestinal tumor-associated protein GA733-2) (Tumor-associated calcium signal transducer 1) (CD antigen CD326), EPCAM, GA733-2 M1S2 M4S1 MIC18 TACSTD1 TROP1

**Immunogen:**

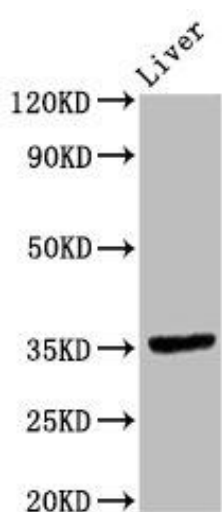
Recombinant Human Epithelial cell adhesion molecule protein (24-265AA).

**Storage:**

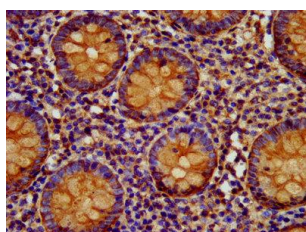
Preservative: 0.03% Proclin 300. Constituents: 50% Glycerol, 0.01M PBS, pH 7.4

## Product Images

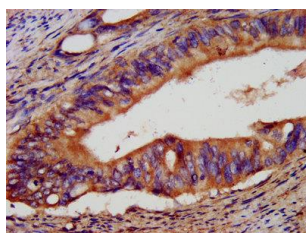
---



Western Blot. Positive WB detected in: Rat liver tissue. All lanes: EPCAM antibody at 9.6 $\mu$ g/ml. Secondary. Goat polyclonal to rabbit IgG at 1/50000 dilution. Predicted band size: 35 kDa. Observed band size: 35 kDa.



IHC image of PACO57024 diluted at 1:400 and staining in paraffin-embedded human appendix tissue performed on a Leica Bond<sup>TM</sup> system. After dewaxing and hydration, antigen retrieval was mediated by high pressure in a citrate buffer (pH 6.0). Section was blocked with 10% normal goat serum 30min at RT. Then primary antibody (1% BSA) was incubated at 4 $^{\circ}$ C overnight. The primary is detected by a biotinylated secondary antibody and visualized using an HRP conjugated SP system.



IHC image of PACO57024 diluted at 1:400 and staining in paraffin-embedded human colon cancer performed on a Leica Bond<sup>TM</sup> system. After dewaxing and hydration, antigen retrieval was mediated by high pressure in a citrate buffer (pH 6.0). Section was blocked with 10% normal goat serum 30min at RT. Then primary antibody (1% BSA) was incubated at 4 $^{\circ}$ C overnight. The primary is detected by a biotinylated secondary antibody and visualized using an HRP conjugated SP system.