

PACO57240

Product Information

Size:

50ug

Reactivity:

Human, Rat

Source:

Rabbit

Isotype:

IgG

Applications:

ELISA, WB, IHC, IF

Recommended dilutions:

ELISA:1:2000-1:10000, WB:1:500-1:5000,
IHC:1:200-1:500, IF:1:50-1:200

Protein Background:

Receptor which may mediate L-selectin-dependent lymphocyte rollings. Binds SELL in a calcium dependent manner. Binds lymphocyte.

Gene ID:

CD300LG

Uniprot

Q6UXG3

Synonyms:

CMRF35-like molecule 9 (CLM-9) (CD300 antigen-like family member G) (Triggering receptor expressed on myeloid cells 4) (TREM-4) (CD antigen CD300g), CD300LG, CLM9
TREM4

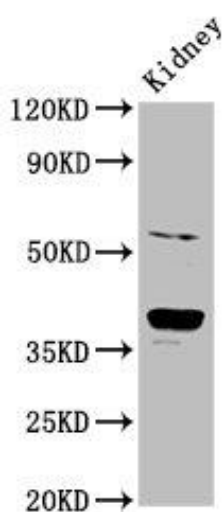
Immunogen:

Recombinant Human CMRF35-like molecule 9 protein (128-241AA).

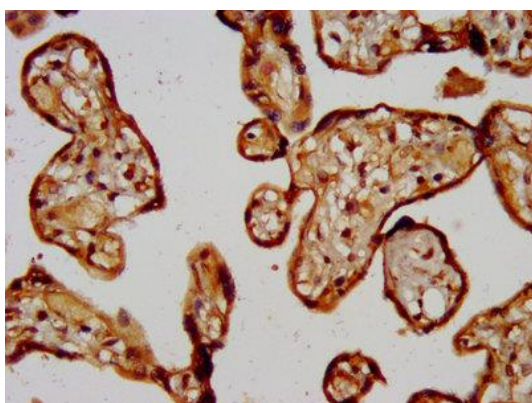
Storage:

Preservative: 0.03% Proclin 300. Constituents: 50% Glycerol, 0.01M PBS, pH 7.4

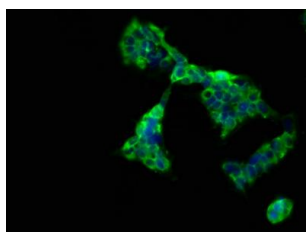
Product Images



Western Blot. Positive WB detected in: Rat kidney tissue. All lanes: CD300LG antibody at 6µg/ml. Secondary. Goat polyclonal to rabbit IgG at 1/50000 dilution. Predicted band size: 37, 27, 25, 34, 30 kDa. Observed band size: 37 kDa.



IHC image of PACO57240 diluted at 1:200 and staining in paraffin-embedded human placenta tissue performed on a Leica Bond™ system. After dewaxing and hydration, antigen retrieval was mediated by high pressure in a citrate buffer (pH 6.0). Section was blocked with 10% normal goat serum 30min at RT. Then primary antibody (1% BSA) was incubated at 4°C overnight. The primary is detected by a biotinylated secondary antibody and visualized using an HRP conjugated SP system.



Immunofluorescence staining of 293 cells with PACO57240 at 1:66, counter-stained with DAPI. The cells were fixed in 4% formaldehyde, permeabilized using 0.2% Triton X-100 and blocked in 10% normal Goat Serum. The cells were then incubated with the antibody overnight at 4°C. The secondary antibody was Alexa Fluor 488-conjugated AffiniPure Goat Anti-Rabbit IgG(H+L).