

# SERPINA11 Antibody



PACO57276

---

## Product Information

**Size:**

50ug

**Reactivity:**

Human

**Source:**

Rabbit

**Isotype:**

IgG

**Applications:**

ELISA, WB

**Recommended dilutions:**

ELISA:1:2000-1:10000, WB:1:500-1:5000

**Protein Background:**

extracellular space, serine-type endopeptidase inhibitor activity.

**Gene ID:**

SERPINA11

**Uniprot**

Q86U17

**Synonyms:**

Serpin A11, SERPINA11

**Immunogen:**

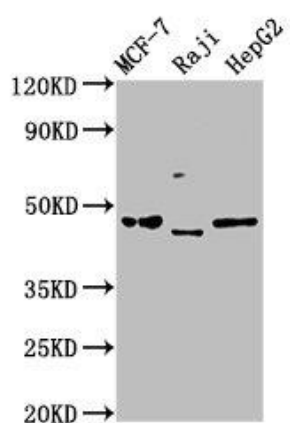
Recombinant Human Serpin A11 protein (279-394AA).

**Storage:**

Preservative: 0.03% Proclin 300. Constituents: 50% Glycerol, 0.01M PBS, pH 7.4

## Product Images

---



Western Blot. Positive WB detected in: MCF-7 whole cell lysate, Raji whole cell lysate, HepG2 whole cell lysate. All lanes: SERPINA11 antibody at 5µg/ml. Secondary. Goat polyclonal to rabbit IgG at 1/50000 dilution. Predicted band size: 47 kDa. Observed band size: 47 kDa.