

# CD99L2 Antibody



PACO57348

---

## Product Information

**Size:**

50ug

**Reactivity:**

Human

**Source:**

Rabbit

**Isotype:**

IgG

**Applications:**

ELISA, WB, IHC, IF

**Recommended dilutions:**

ELISA:1:2000-1:10000, WB:1:500-1:5000,  
IHC:1:200-1:500, IF:1:50-1:200

**Protein Background:**

Plays a role in a late step of leukocyte extravasation helping cells to overcome the endothelial basement membrane. Acts at the same site as, but independently of, PECAM1. Homophilic adhesion molecule, but these interactions may not be required for cell aggregation.

**Gene ID:**

CD99L2

**Uniprot**

Q8TCZ2

**Synonyms:**

CD99 antigen-like protein 2 (MIC2-like protein 1) (CD antigen CD99), CD99L2, MIC2L1

**Immunogen:**

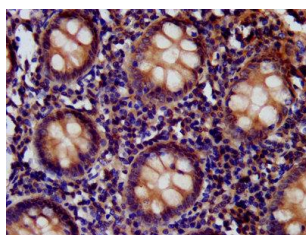
Recombinant Human CD99 antigen-like protein 2 protein (26-145AA).

**Storage:**

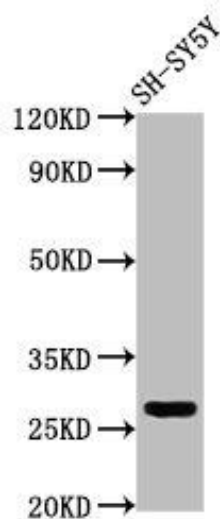
Preservative: 0.03% Proclin 300. Constituents: 50% Glycerol, 0.01M PBS, pH 7.4

## Product Images

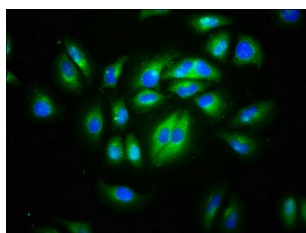
---



IHC image of PACO57348 diluted at 1:400 and staining in paraffin-embedded human appendix tissue performed on a Leica Bond™ system.



Western Blot. Positive WB detected in: SH-SY5Y whole cell lysate. All lanes: CD99L2 antibody at 4µg/ml. Secondary: Goat polyclonal to rabbit IgG at 1/50000 dilution. Predicted band size: 28, 23, 21, 16, 29 kDa. Observed band size: 28 kDa.



Immunofluorescence staining of A549 cells with PACO57348 at 1:133, counter-stained with DAPI. The cells were fixed in 4% formaldehyde, permeabilized using 0.2% Triton X-100 and blocked in 10% normal Goat Serum. The cells were then incubated with the antibody overnight at 4°C. The secondary antibody was Alexa Fluor 488-conjugated AffiniPure Goat Anti-Rabbit IgG(H+L).