

# SLAIN1 Antibody



PACO57388

---

## Product Information

**Size:**

50ug

**Reactivity:**

Human

**Source:**

Rabbit

**Isotype:**

IgG

**Applications:**

ELISA, WB, IHC

**Recommended dilutions:**

ELISA:1:2000-1:10000, WB:1:500-1:5000,  
IHC:1:200-1:500

**Protein Background:**

**Gene ID:**

SLAIN1

**Uniprot**

Q8ND83

**Synonyms:**

SLAIN motif-containing protein 1, SLAIN1, C13orf32

**Immunogen:**

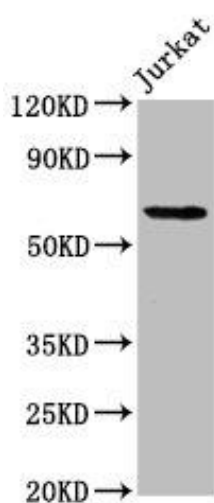
Recombinant Human SLAIN motif-containing protein 1 protein (43-136AA).

**Storage:**

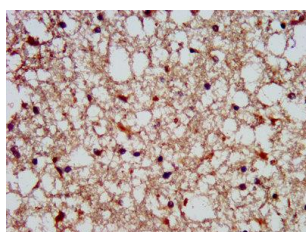
Preservative: 0.03% Proclin 300. Constituents: 50% Glycerol, 0.01M PBS, pH 7.4

## Product Images

---



Western Blot. Positive WB detected in: Jurkat whole cell lysate. All lanes: SLAIN1 antibody at 4.2µg/ml. Secondary: Goat polyclonal to rabbit IgG at 1/50000 dilution. Predicted band size: 61, 34, 21, 48 kDa. Observed band size: 61 kDa.



IHC image of PACO57388 diluted at 1:300 and staining in paraffin-embedded human brain tissue performed on a Leica Bond™ system.