

OCC1 Antibody

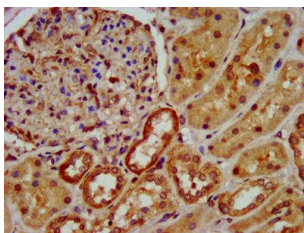


PACO57392

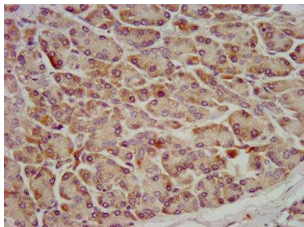
Product Information

Size: 50ug	Protein Background:
Reactivity: Human	Gene ID: OCC1
Source: Rabbit	Uniprot Q8TAD7
Isotype: IgG	Synonyms: Overexpressed in colon carcinoma 1 protein (OCC-1) (AGD3), OCC1, C12orf75
Applications: ELISA, IHC	Immunogen: Recombinant Human Overexpressed in colon carcinoma 1 protein (1-63AA).
Recommended dilutions: ELISA:1:2000-1:10000, IHC:1:500-1:1000	Storage: Preservative: 0.03% Proclin 300. Constituents: 50% Glycerol, 0.01M PBS, pH 7.4

Product Images



IHC image of PACO57392 diluted at 1:600 and staining in paraffin-embedded human kidney tissue performed on a Leica Bond™ system. After dewaxing and hydration, antigen retrieval was mediated by high pressure in a citrate buffer (pH 6.0). Section was blocked with 10% normal goat serum 30min at RT. Then primary antibody (1% BSA) was incubated at 4°C overnight. The primary is detected by a biotinylated secondary antibody and visualized using an HRP conjugated SP system.



IHC image of PACO57392 diluted at 1:600 and staining in paraffin-embedded human pancreatic tissue performed on a Leica Bond™ system. After dewaxing and hydration, antigen retrieval was mediated by high pressure in a citrate buffer (pH 6.0). Section was blocked with 10% normal goat serum 30min at RT. Then primary antibody (1% BSA) was incubated at 4°C overnight. The primary is detected by a biotinylated secondary antibody and visualized using an HRP conjugated SP system.