

SCUBE2 Antibody



PACO57448

Product Information

Size:

50ug

Reactivity:

Human, Rat

Source:

Rabbit

Isotype:

IgG

Applications:

ELISA, WB, IHC

Recommended dilutions:

ELISA:1:2000-1:10000, WB:1:500-1:5000,
IHC:1:200-1:500

Protein Background:

cell surface, extracellular region, extracellular space, cell differentiation, signal transduction.

Gene ID:

SCUBE2

Uniprot

Q9NQ36

Synonyms:

Signal peptide, CUB and EGF-like domain-containing protein 2 (Protein CEGP1) (Scube/You), SCUBE2, CEGP1

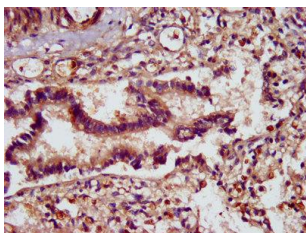
Immunogen:

Recombinant Human Signal peptide, CUB and EGF-like domain-containing protein 2 protein (534-703AA).

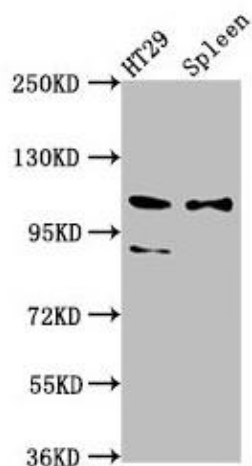
Storage:

Preservative: 0.03% Proclin 300. Constituents: 50% Glycerol, 0.01M PBS, pH 7.4

Product Images



IHC image of PACO57448 diluted at 1:400 and staining in paraffin-embedded human lung tissue performed on a Leica Bond™ system. After dewaxing and hydration, antigen retrieval was mediated by high pressure in a citrate buffer (pH 6.0). Section was blocked with 10% normal goat serum 30min at RT. Then primary antibody (1% BSA) was incubated at 4°C overnight. The primary is detected by a biotinylated secondary antibody and visualized using an HRP conjugated SP system.



Western Blot. Positive WB detected in: HT29 whole cell lysate, Rat spleen tissue. All lanes: SCUBE2 antibody at 8.7µg/ml. Secondary. Goat polyclonal to rabbit IgG at 1/50000 dilution. Predicted band size: 110, 107, 89 kDa. Observed band size: 110, 89 kDa.