

EBF3 Antibody



PACO57516

Product Information

Size:

50ug

Reactivity:

Human

Source:

Rabbit

Isotype:

IgG

Applications:

ELISA, WB

Recommended dilutions:

ELISA:1:2000-1:10000, WB:1:500-1:5000

Protein Background:

Transcriptional activator. Recognizes variations of the palindromic sequence 5'-ATTCCCNNGGGAATT-3'.

Gene ID:

EBF3

Uniprot

Q9H4W6

Synonyms:

Transcription factor COE3 (Early B-cell factor 3) (EBF-3) (Olf-1/EBF-like 2) (O/E-2) (OE-2), EBF3, COE3

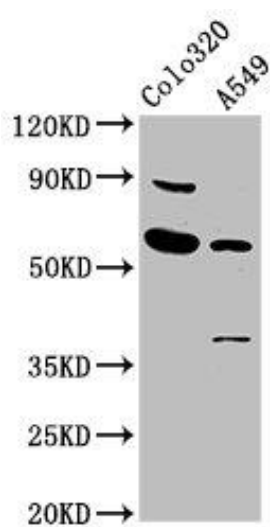
Immunogen:

Recombinant Human Transcription factor COE3 protein (416-530AA).

Storage:

Preservative: 0.03% Proclin 300. Constituents: 50% Glycerol, 0.01M PBS, pH 7.4

Product Images



Western Blot. Positive WB detected in: Colo320 whole cell lysate, A549 whole cell lysate. All lanes: EBF3 antibody at 5.6 μ g/ml. Secondary. Goat polyclonal to rabbit IgG at 1/50000 dilution. Predicted band size: 65, 61 kDa. Observed band size: 65 kDa.