

CHMP1A Antibody



PACO57524

Product Information

Size:

50ug

Reactivity:

Human

Source:

Rabbit

Isotype:

IgG

Applications:

ELISA, WB, IHC, IF

Recommended dilutions:

ELISA:1:2000-1:10000, WB:1:1000-1:5000,
IHC:1:200-1:500, IF:1:50-1:200

Protein Background:

Gene ID:

CHMP1A

Uniprot

Q9HD42

Synonyms:

Charged multivesicular body protein 1a (Chromatin-modifying protein 1a) (CHMP1a) (Vacuolar protein sorting-associated protein 46-1) (Vps46-1) (hVps46-1), CHMP1A, CHMP1 KIAA0047 PCOLN3 PRSM1

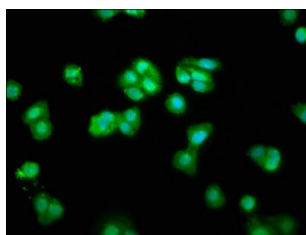
Immunogen:

Recombinant Human Charged multivesicular body protein 1a protein (1-196AA).

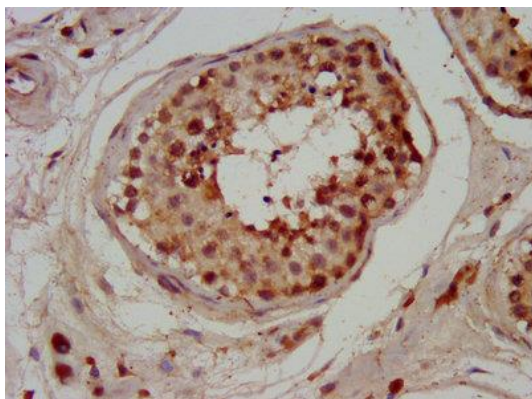
Storage:

Preservative: 0.03% Proclin 300. Constituents: 50% Glycerol, 0.01M PBS, pH 7.4

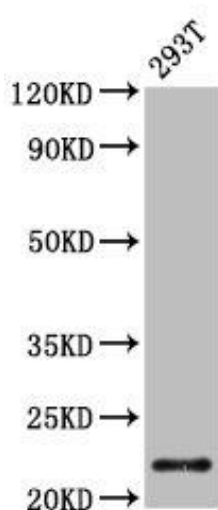
Product Images



Immunofluorescence staining of HepG2 cells with PACO57524 at 1:66, counter-stained with DAPI. The cells were fixed in 4% formaldehyde, permeabilized using 0.2% Triton X-100 and blocked in 10% normal Goat Serum. The cells were then incubated with the antibody overnight at 4°C. The secondary antibody was Alexa Fluor 488-conjugated AffiniPure Goat Anti-Rabbit IgG(H+L).



IHC image of PACO57524 diluted at 1:200 and staining in paraffin-embedded human testis tissue performed on a Leica Bond™ system. After dewaxing and hydration, antigen retrieval was mediated by high pressure in a citrate buffer (pH 6.0). Section was blocked with 10% normal goat serum 30min at RT. Then primary antibody (1% BSA) was incubated at 4°C overnight. The primary is detected by a biotinylated secondary antibody and visualized using an HRP conjugated SP system.



Western Blot. Positive WB detected in: 293T whole cell lysate. All lanes: CHMP1A antibody at 4.2µg/ml. Secondary. Goat polyclonal to rabbit IgG at 1/50000 dilution. Predicted band size: 22, 8 kDa. Observed band size: 22 kDa.