

Product Information

Size:

50ug

Reactivity:

Human

Source:

Rabbit

Isotype:

IgG

Applications:

ELISA, WB, IF

Recommended dilutions:

ELISA:1:2000-1:10000, WB:1:500-1:5000,
IF:1:200-1:500

Protein Background:

Involved in the biogenesis of the 60S ribosomal subunit. Required for maturation of the 28S rRNA. Functions as a component of the Five Friends of Methylated CHTOP (5FMC) complex; the 5FMC complex is recruited to ZNF148 by methylated CHTOP, leading to desumoylation of ZNF148 and subsequent transactivation of ZNF148 target genes.

Gene ID:

LAS1L

Uniprot

Q9Y4W2

Synonyms:

Ribosomal biogenesis protein LAS1L (Protein LAS1 homolog), LAS1L

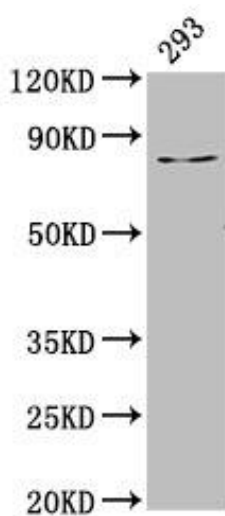
Immunogen:

Recombinant Human Ribosomal biogenesis protein LAS1L protein (490-565AA).

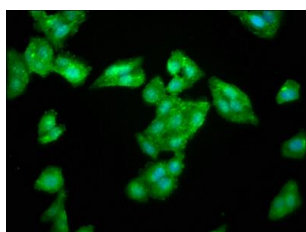
Storage:

Preservative: 0.03% Proclin 300. Constituents: 50% Glycerol, 0.01M PBS, pH 7.4

Product Images



Western Blot. Positive WB detected in: 293 whole cell lysate. All lanes: LAS1L antibody at 3.5µg/ml. Secondary: Goat polyclonal to rabbit IgG at 1/50000 dilution. Predicted band size: 84, 82, 77, 34 kDa. Observed band size: 84 kDa.



Immunofluorescence staining of HepG2 cells with PACO57616 at 1:266, counter-stained with DAPI. The cells were fixed in 4% formaldehyde, permeabilized using 0.2% Triton X-100 and blocked in 10% normal Goat Serum. The cells were then incubated with the antibody overnight at 4°C. The secondary antibody was Alexa Fluor 488-conjugated AffiniPure Goat Anti-Rabbit IgG(H+L).