

# CDR2L Antibody



PACO57692

---

## Product Information

**Size:**

50ug

**Reactivity:**

Human

**Source:**

Rabbit

**Isotype:**

IgG

**Applications:**

ELISA, WB, IHC

**Recommended dilutions:**

ELISA:1:2000-1:10000, WB:1:500-1:5000,  
IHC:1:200-1:500

**Protein Background:**

**Gene ID:**

CDR2L

**Uniprot**

Q86X02

**Synonyms:**

Cerebellar degeneration-related protein 2-like (Paraneoplastic 62 kDa antigen), CDR2L, HUMPPA

**Immunogen:**

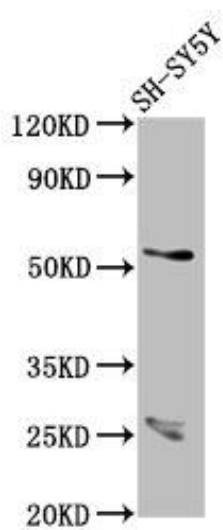
Recombinant Human Cerebellar degeneration-related protein 2-like protein (376-465AA).

**Storage:**

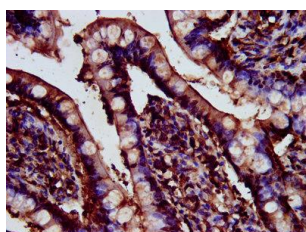
Preservative: 0.03% Proclin 300. Constituents: 50% Glycerol, 0.01M PBS, pH 7.4

## Product Images

---



Western Blot. Positive WB detected in: SH-SY5Y whole cell lysate. All lanes: CDR2L antibody at 7.1 $\mu$ g/ml. Secondary. Goat polyclonal to rabbit IgG at 1/50000 dilution. Predicted band size: 54 kDa. Observed band size: 54 kDa.



IHC image of PACO57692 diluted at 1:200 and staining in paraffin-embedded human small intestine tissue performed on a Leica Bond<sup>TM</sup> system. After dewaxing and hydration, antigen retrieval was mediated by high pressure in a citrate buffer (pH 6.0). Section was blocked with 10% normal goat serum 30min at RT. Then primary antibody (1% BSA) was incubated at 4 $^{\circ}$ C overnight. The primary is detected by a biotinylated secondary antibody and visualized using an HRP conjugated SP system.