

PACO57712

Product Information

Size:

50ug

Reactivity:

Human

Source:

Rabbit

Isotype:

IgG

Applications:

ELISA, WB

Recommended dilutions:

ELISA:1:2000-1:10000, WB:1:500-1:5000

Protein Background:

Removes residual C-terminal Arg or Lys remaining after initial endoprotease cleavage during prohormone processing. Processes proinsulin.

Gene ID:

CPE

Uniprot

P16870

Synonyms:

Carboxypeptidase E (CPE) (EC 3.4.17.10) (Carboxypeptidase H) (CPH) (Enkephalin convertase) (Prohormone-processing carboxypeptidase), CPE

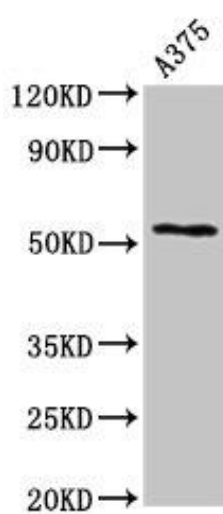
Immunogen:

Recombinant Human Carboxypeptidase E protein (252-363AA).

Storage:

Preservative: 0.03% Proclin 300. Constituents: 50% Glycerol, 0.01M PBS, pH 7.4

Product Images



Western Blot. Positive WB detected in: A375 whole cell lysate. All lanes: CPE antibody at 2.7 μ g/ml. Secondary. Goat polyclonal to rabbit IgG at 1/50000 dilution. Predicted band size: 54, 50 kDa. Observed band size: 54 kDa.