

Product Information

Size:

50ug

Reactivity:

Human, Mouse, Rat

Source:

Rabbit

Isotype:

IgG

Applications:

ELISA, WB, IHC, IF

Recommended dilutions:

ELISA:1:2000-1:10000, WB:1:500-1:5000,
IHC:1:200-1:500, IF:1:50-1:200

Protein Background:

Serine protease that cleaves extracellular substrates, and contributes to the proteolytic processing of growth factors, such as HGF and MST1/HGFL. Plays a role in cell growth and maintenance of cell morphology. Plays a role in the proteolytic processing of ACE2. Mediates the proteolytic cleavage of urinary UMOD that is required for UMOD polymerization.

Gene ID:

HPN

Uniprot

P05981

Synonyms:

Serine protease hepsin (EC 3.4.21.106) (Transmembrane protease serine 1) [Cleaved into: Serine protease hepsin non-catalytic chain; Serine protease hepsin catalytic chain], HPN, Tmprss1

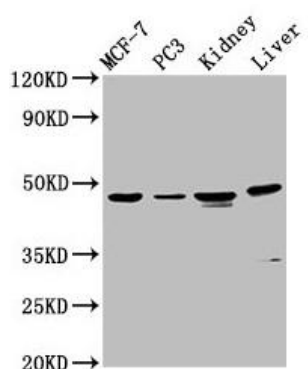
Immunogen:

Recombinant Human Serine protease hepsin protein (294-413AA).

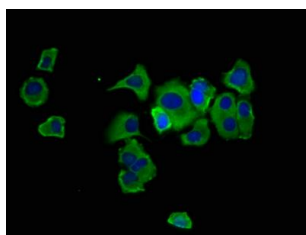
Storage:

Preservative: 0.03% Proclin 300. Constituents: 50% Glycerol, 0.01M PBS, pH 7.4

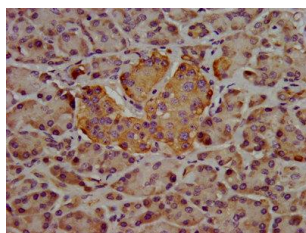
Product Images



Western Blot. Positive WB detected in: MCF-7 whole cell lysate, PC-3 whole cell lysate, Rat kidney tissue, Mouse liver tissue. All lanes: HPN antibody at 4.5 μ g/ml. Secondary. Goat polyclonal to rabbit IgG at 1/50000 dilution. Predicted band size: 46 kDa. Observed band size: 46 kDa.



Immunofluorescence staining of MCF-7 cells with PACO57812 at 1:133, counter-stained with DAPI. The cells were fixed in 4% formaldehyde, permeabilized using 0.2% Triton X-100 and blocked in 10% normal Goat Serum. The cells were then incubated with the antibody overnight at 4°C. The secondary antibody was Alexa Fluor 488-conjugated AffiniPure Goat Anti-Rabbit IgG(H+L).



IHC image of PACO57812 diluted at 1:400 and staining in paraffin-embedded human pancreatic tissue performed on a Leica BondTM system. After dewaxing and hydration, antigen retrieval was mediated by high pressure in a citrate buffer (pH 6.0). Section was blocked with 10% normal goat serum 30min at RT. Then primary antibody (1% BSA) was incubated at 4°C overnight. The primary is detected by a biotinylated secondary antibody and visualized using an HRP conjugated SP system.