

PACO57916

---

## Product Information

**Size:**

50ug

**Reactivity:**

Human

**Source:**

Rabbit

**Isotype:**

IgG

**Applications:**

ELISA, IHC

**Recommended dilutions:**

ELISA:1:2000-1:10000, IHC:1:200-1:500

**Protein Background:**

Serine endoprotease that processes various proproteins by cleavage at paired basic amino acid, , recognizing the RXXX[KR]R consensus motif. Likely functions in the constitutive secretory pathway.

**Gene ID:**

PCSK7

**Uniprot**

Q16549

**Synonyms:**

Proprotein convertase subtilisin/kexin type 7 (EC 3.4.21) (Lymphoma proprotein convertase) (Prohormone convertase 7) (Proprotein convertase 7) (PC7) (Proprotein convertase 8) (PC8) (hPC8) (Subtilisin/kexin-like protease PC7), PCSK7, LPC PC7 PC8 SPC7

**Immunogen:**

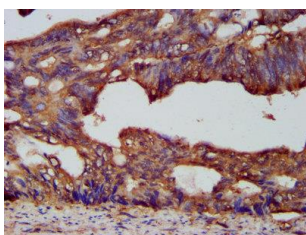
Recombinant Human Proprotein convertase subtilisin/kexin type 7 protein (189-362AA).

**Storage:**

Preservative: 0.03% Proclin 300. Constituents: 50% Glycerol, 0.01M PBS, pH 7.4

## Product Images

---



IHC image of PACO57916 diluted at 1:200 and staining in paraffin-embedded human colon cancer performed on a Leica Bond™ system. After dewaxing and hydration, antigen retrieval was mediated by high pressure in a citrate buffer (pH 6.0). Section was blocked with 10% normal goat serum 30min at RT. Then primary antibody (1% BSA) was incubated at 4°C overnight. The primary is detected by a biotinylated secondary antibody and visualized using an HRP conjugated SP system.