

SLC7A1 Antibody



PACO57980

Product Information

Size:

50ug

Reactivity:

Human

Source:

Rabbit

Isotype:

IgG

Applications:

ELISA, IHC, IF

Recommended dilutions:

ELISA:1:2000-1:10000, IHC:1:500-1:1000,
IF:1:50-1:200

Protein Background:

High-affinity, low capacity permease involved in the transport of the cationic amino acid, (arginine, lysine and ornithine) in non-hepatic tissues.

Gene ID:

SLC7A1

Uniprot

P30825

Synonyms:

High affinity cationic amino acid, transporter 1 (CAT-1) (CAT1) (Ecotropic retroviral leukemia receptor homolog) (Ecotropic retrovirus receptor homolog) (Solute carrier family 7 member 1) (System Y+ basic amino acid, transporter), SLC7A1, ATRC1 ERR REC1L

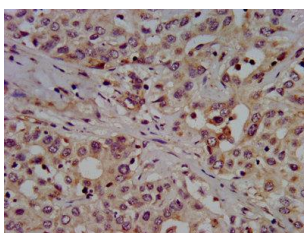
Immunogen:

Recombinant Human High affinity cationic amino acid, transporter 1 protein (430-492AA).

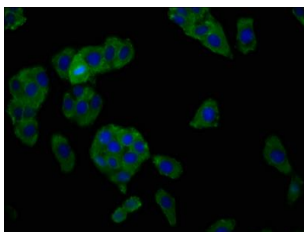
Storage:

Preservative: 0.03% Proclin 300. Constituents: 50% Glycerol, 0.01M PBS, pH 7.4

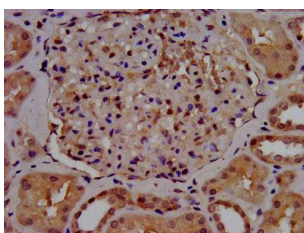
Product Images



IHC image of PACO57980 diluted at 1:500 and staining in paraffin-embedded human liver cancer performed on a Leica Bond™ system. After dewaxing and hydration, antigen retrieval was mediated by high pressure in a citrate buffer (pH 6.0). Section was blocked with 10% normal goat serum 30min at RT. Then primary antibody (1% BSA) was incubated at 4°C overnight. The primary is detected by a biotinylated secondary antibody and visualized using an HRP conjugated SP system.



Immunofluorescence staining of HepG2 cells with PACO57980 at 1:166, counter-stained with DAPI. The cells were fixed in 4% formaldehyde, permeabilized using 0.2% Triton X-100 and blocked in 10% normal Goat Serum. The cells were then incubated with the antibody overnight at 4°C. The secondary antibody was Alexa Fluor 488-conjugated AffiniPure Goat Anti-Rabbit IgG(H+L).



IHC image of PACO57980 diluted at 1:500 and staining in paraffin-embedded human kidney tissue performed on a Leica Bond™ system. After dewaxing and hydration, antigen retrieval was mediated by high pressure in a citrate buffer (pH 6.0). Section was blocked with 10% normal goat serum 30min at RT. Then primary antibody (1% BSA) was incubated at 4°C overnight. The primary is detected by a biotinylated secondary antibody and visualized using an HRP conjugated SP system.