

Product Information

Size:

50ug

Reactivity:

Human, Rat

Source:

Rabbit

Isotype:

IgG

Applications:

ELISA, WB, IF

Recommended dilutions:

ELISA:1:2000-1:10000, WB:1:500-1:5000,
IF:1:200-1:500

Protein Background:

Plays important roles in the production of 11-cis retinal and in visual pigment regeneration. The soluble form binds vitamin A (all-trans-retinol), making it available for LRAT processing to all-trans-retinyl ester. The membrane form, palmitoylated by LRAT, binds all-trans-retinyl esters, making them available for IMH (isomerohydrolase) processing to all-cis-retinol. The soluble form is regenerated by transferring its palmitoyl groups onto 11-cis-retinol, a reaction catalyzed by LRAT. The enzymatic activity is linearly dependent of the expression levels and membrane association.

Gene ID:

RPE65

Uniprot

Q16518

Synonyms:

Retinoid isomerohydrolase (EC 3.1.1.64) (All-trans-retinyl-palmitate hydrolase) (Meso-zeaxanthin isomerase) (EC 5.3.3) (Retinal pigment epithelium-specific 65 kDa protein) (Retinol isomerase), RPE65

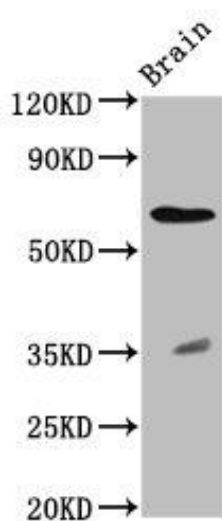
Immunogen:

Recombinant Human Retinoid isomerohydrolase protein (348-484AA).

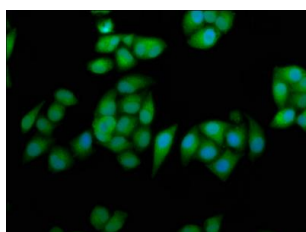
Storage:

Preservative: 0.03% Proclin 300. Constituents: 50% Glycerol, 0.01M PBS, pH 7.4

Product Images



Western Blot. Positive WB detected in: Rat brain tissue. All lanes: RPE65 antibody at 2.3 μ g/ml. Secondary. Goat polyclonal to rabbit IgG at 1/50000 dilution. Predicted band size: 61 kDa. Observed band size: 61 kDa.



Immunofluorescence staining of HeLa cells with PACO58176 at 1:233, counter-stained with DAPI. The cells were fixed in 4% formaldehyde, permeabilized using 0.2% Triton X-100 and blocked in 10% normal Goat Serum. The cells were then incubated with the antibody overnight at 4°C. The secondary antibody was Alexa Fluor 488-conjugated AffiniPure Goat Anti-Rabbit IgG(H+L).