

PACO58260

Product Information

Size:

50ug

Reactivity:

Human

Source:

Rabbit

Isotype:

IgG

Applications:

ELISA, IHC, IF

Recommended dilutions:

ELISA:1:2000-1:10000, IHC:1:20-1:200,
IF:1:50-1:200

Protein Background:

Required for selective autophagy (aggrephagy) but not for autophagic degradation of bulk cytosol in response to starvation. Involved in the formation and degradation of cytoplasmic polyubiquitin-containing bodies (p62 bodies, ALIS/aggresome-like induced structures). May play a role as adaptor or scaffolding protein by promoting the association of the E3-like ligase ATG12-ATG5-ATG16L and LC3 to ubiquitinated target substrate. The association with GABARAP is required for its recruitment to LC3B-positive p62 bodies suggesting a role in targeting certain p62 structures for clearance. Involved in midbody ring degradation.

Gene ID:

WDFY3

Uniprot

Q8IZQ1

Synonyms:

WD repeat and FYVE domain-containing protein 3 (Autophagy-linked FYVE protein) (Alfy), WDFY3, KIAA0993

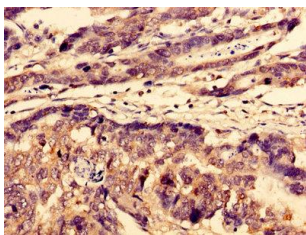
Immunogen:

Recombinant Human WD repeat and FYVE domain-containing protein 3 protein (1-100AA).

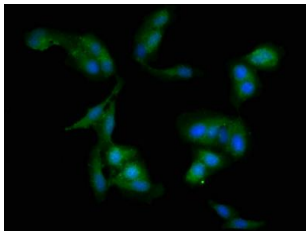
Storage:

Preservative: 0.03% Proclin 300. Constituents: 50% Glycerol, 0.01M PBS, pH 7.4

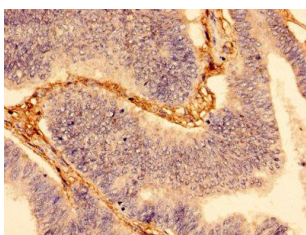
Product Images



Immunohistochemistry of paraffin-embedded human gastric cancer using PACO58260 at dilution of 1:100.



Immunofluorescent analysis of HeLa cells using PACO58260 at dilution of 1:100 and Alexa Fluor 488-conjugated AffiniPure Goat Anti-Rabbit IgG(H+L).



Immunohistochemistry of paraffin-embedded human colon cancer using PACO58260 at dilution of 1:100.