

PACO58264

Product Information

Size:

50ug

Reactivity:

Human

Source:

Rabbit

Isotype:

IgG

Applications:

ELISA, WB

Recommended dilutions:

ELISA:1:2000-1:10000, WB:1:500-1:5000

Protein Background:

Core component of the SMC5-SMC6 complex, a complex involved in repair of DNA double-strand breaks by homologous recombination. The complex may promote sister chromatid homologous recombination by recruiting the SMC1-SMC3 cohesin complex to double-strand breaks. The complex is required for telomere maintenance via recombination in ALT (alternative lengthening of telomeres) cell lines and mediates sumoylation of shelterin complex (telosome) components which is proposed to lead to shelterin complex disassembly in ALT-associated PML bodies (APBs). Required for recruitment of telomeres to PML nuclear bodies. Required for sister chromatid cohesion during prometaphase and mitotic progression; the function seems to be independent of SMC6. SMC5-SMC6 complex may prevent transcription of episomal DNA, such as circular viral DNA genome.

Gene ID:

SMC5

Uniprot

Q8IY18

Synonyms:

Structural maintenance of chromosomes protein 5 (SMC protein 5) (SMC-5) (hSMC5), SMC5, KIAA0594 SMC5L1

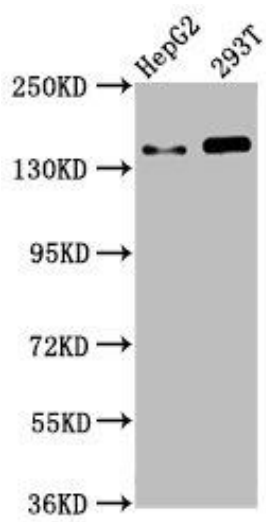
Immunogen:

Recombinant Human Structural maintenance of chromosomes protein 5 protein (296-403AA).

Storage:

Preservative: 0.03% Proclin 300. Constituents: 50% Glycerol, 0.01M PBS, pH 7.4

Product Images



Western Blot. Positive WB detected in: HepG2 whole cell lysate, 293T whole cell lysate. All lanes: SMC5 antibody at 4.6 μ g/ml. Secondary. Goat polyclonal to rabbit IgG at 1/50000 dilution. Predicted band size: 129 kDa. Observed band size: 145 kDa.