

PACO58268

Product Information

Size:

50ug

Reactivity:

Human, Mouse

Source:

Rabbit

Isotype:

IgG

Applications:

ELISA, WB

Recommended dilutions:

ELISA:1:2000-1:10000, WB:1:500-1:5000

Protein Background:

Has (dihydro)ceramide synthesis activity with relatively broad substrate specificity, but a preference for C18:0 and other middle- to long-chain fatty acyl-CoAs. It is crucial for the synthesis of very long-chain ceramides in the epidermis, to maintain epidermal lipid homeostasis and terminal differentiation.

Gene ID:

CERS3

Uniprot

Q8IU89

Synonyms:

Ceramide synthase 3 (CerS3) (EC 2.3.1.24) (Dihydroceramide synthase 3) (LAG1 longevity assurance homolog 3), CERS3, LASS3

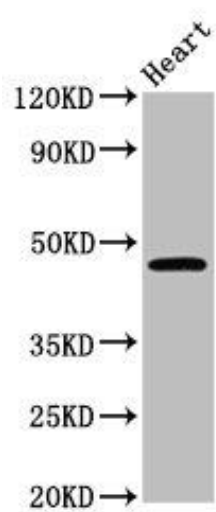
Immunogen:

Recombinant Human Ceramide synthase 3 protein (59-134AA).

Storage:

Preservative: 0.03% Proclin 300. Constituents: 50% Glycerol, 0.01M PBS, pH 7.4

Product Images



Western Blot. Positive WB detected in: Mouse heart tissue. All lanes: CERS3 antibody at 3.6 μ g/ml. Secondary. Goat polyclonal to rabbit IgG at 1/50000 dilution. Predicted band size: 47 kDa. Observed band size: 47 kDa.