

Product Information

Size:

50ug

Reactivity:

Human

Source:

Rabbit

Isotype:

IgG

Applications:

ELISA, WB, IHC

Recommended dilutions:

ELISA:1:2000-1:10000, WB:1:500-1:5000,
IHC:1:200-1:500

Protein Background:

Acts as soluble receptor for class I MHC antigens. Binds both classical and non-classical HLA class I molecules but with reduced affinities compared to LILRB1 or LILRB2. Binds with high affinity to the surface of monocytes, leading to abolish LPS-induced TNF-alpha production by monocytes.

Gene ID:

LILRA3

Uniprot

Q8N6C8

Synonyms:

Leukocyte immunoglobulin-like receptor subfamily A member 3 (CD85 antigen-like family member E) (Immunoglobulin-like transcript 6) (ILT-6) (Leukocyte immunoglobulin-like receptor 4) (LIR-4) (Monocyte inhibitory receptor HM43/HM31) (CD antigen CD85e), LILRA3, ILT6 LIR4

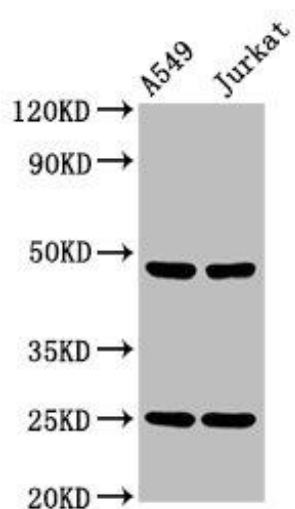
Immunogen:

Recombinant Human Leukocyte immunoglobulin-like receptor subfamily A member 3 protein (222-313AA).

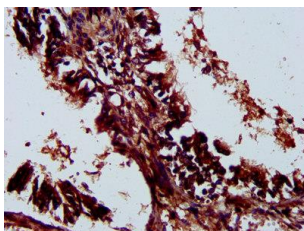
Storage:

Preservative: 0.03% Proclin 300. Constituents: 50% Glycerol, 0.01M PBS, pH 7.4

Product Images



Western Blot. Positive WB detected in: A549 whole cell lysate, Jurkat whole cell lysate. All lanes: LILRA3 antibody at 4.2 μ g/ml. Secondary: Goat polyclonal to rabbit IgG at 1/50000 dilution. Predicted band size: 48, 41, 50 kDa. Observed band size: 48 kDa.



IHC image of PACO58324 diluted at 1:300 and staining in paraffin-embedded human lung tissue performed on a Leica BondTM system. After dewaxing and hydration, antigen retrieval was mediated by high pressure in a citrate buffer (pH 6.0). Section was blocked with 10% normal goat serum 30min at RT. Then primary antibody (1% BSA) was incubated at 4°C overnight. The primary is detected by a biotinylated secondary antibody and visualized using an HRP conjugated SP system.