

SLC25A37 Antibody



PACO58516

Product Information

Size:

50ug

Reactivity:

Human

Source:

Rabbit

Isotype:

IgG

Applications:

ELISA, IHC

Recommended dilutions:

ELISA:1:2000-1:10000, IHC:1:200-1:500

Protein Background:

Mitochondrial iron transporter that specifically mediates iron uptake in developing erythroid cells, thereby playing an essential role in heme biosynthesis. The iron delivered into the mitochondria, presumably as Fe(2+), is then probably delivered to ferrochelatase to catalyze Fe(2+) incorporation into protoporphyrin IX to make heme.

Gene ID:

SLC25A37

Uniprot

Q9NYZ2

Synonyms:

Mitoferrin-1 (Mitochondrial iron transporter 1) (Mitochondrial solute carrier protein) (Solute carrier family 25 member 37), SLC25A37, MFRN MSCP

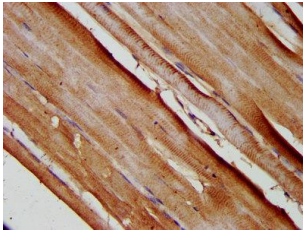
Immunogen:

Recombinant Human Mitoferrin-1 protein (1-44AA).

Storage:

Preservative: 0.03% Proclin 300. Constituents: 50% Glycerol, 0.01M PBS, pH 7.4

Product Images



IHC image of PACO58516 diluted at 1:200 and staining in paraffin-embedded human skeletal muscle tissue performed on a Leica Bond™ system. After dewaxing and hydration, antigen retrieval was mediated by high pressure in a citrate buffer (pH 6.0). Section was blocked with 10% normal goat serum 30min at RT. Then primary antibody (1% BSA) was incubated at 4°C overnight. The primary is detected by a biotinylated secondary antibody and visualized using an HRP conjugated SP system.