

Product Information

Size:

50ug

Reactivity:

Human

Source:

Rabbit

Isotype:

IgG

Applications:

ELISA, IHC

Recommended dilutions:

ELISA:1:2000-1:10000, IHC:1:500-1:1000

Protein Background:

N-alpha-acetyltransferase that specifically mediates the acetylation of N-terminal residues of the transmembrane proteins, with a strong preference for N-termini facing the cytosol. Displays N-terminal acetyltransferase activity towards a range of N-terminal sequences including those starting with Met-Lys, Met-Val, Met-Ala and Met-Met. Required for normal chromosomal segregation during anaphase. May also show histone acetyltransferase activity; such results are however unclear in vivo and would require additional experimental evidences.

Gene ID:

NAA60

Uniprot

Q9H7X0

Synonyms:

N-alpha-acetyltransferase 60 (hNaa60) (EC 2.3.1.259) (Histone acetyltransferase type B protein 4) (HAT4) (EC 2.3.1.48) (N-acetyltransferase 15) (N-alpha-acetyltransferase F) (NatF), NAA60, HAT4 NAT15

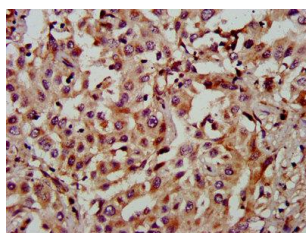
Immunogen:

Recombinant Human N-alpha-acetyltransferase 60 protein (1-94AA).

Storage:

Preservative: 0.03% Proclin 300. Constituents: 50% Glycerol, 0.01M PBS, pH 7.4

Product Images



IHC image of PACO58536 diluted at 1:900 and staining in paraffin-embedded human liver cancer performed on a Leica Bond™ system. After dewaxing and hydration, antigen retrieval was mediated by high pressure in a citrate buffer (pH 6.0). Section was blocked with 10% normal goat serum 30min at RT. Then primary antibody (1% BSA) was incubated at 4°C overnight. The primary is detected by a biotinylated secondary antibody and visualized using an HRP conjugated SP system.