

C1GALT1 Antibody



PACO58560

Product Information

Size:

50ug

Reactivity:

Human

Source:

Rabbit

Isotype:

IgG

Applications:

ELISA, WB, IHC, IF

Recommended dilutions:

ELISA:1:2000-1:10000, WB:1:500-1:5000,
IHC:1:500-1:1000, IF:1:200-1:500

Protein Background:

Glycosyltransferase that generates the core 1 O-glycan Gal-beta1-3GalNAc-alpha1-Ser/Thr (T antigen), which is a precursor for many extended O-glycans in glycoproteins. Plays a central role in many processes, such as angiogenesis, thrombopoiesis and kidney homeostasis development.

Gene ID:

C1GALT1

Uniprot

Q9NS00

Synonyms:

Glycoprotein-N-acetylgalactosamine 3-beta-galactosyltransferase 1 (EC 2.4.1.122) (B3Gal-T8) (Core 1 O-glycan T-synthase) (Core 1 UDP-galactose: N-acetylgalactosamine-alpha-R beta 1,3-galactosyltransferase 1) (Beta-1,3-galactosyltransferase) (Core 1 beta1,3-galactosyltransferase 1) (C1GalT1) (Core 1 beta3-Gal-T1), C1GALT1

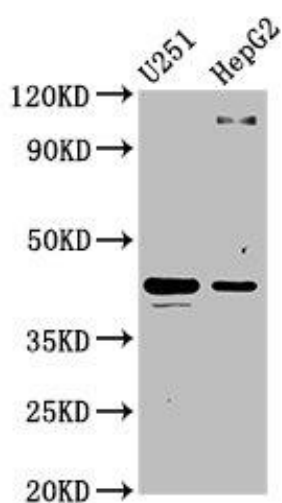
Immunogen:

Recombinant Human Glycoprotein-N-acetylgalactosamine 3-beta-galactosyltransferase 1 protein (34-143AA).

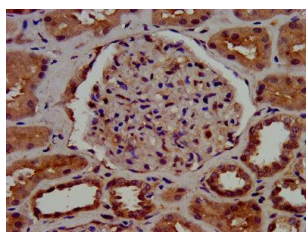
Storage:

Preservative: 0.03% Proclin 300. Constituents: 50% Glycerol, 0.01M PBS, pH 7.4

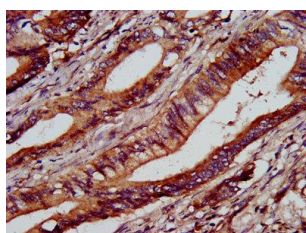
Product Images



Western Blot. Positive WB detected in: U251 whole cell lysate, HepG2 whole cell lysate. All lanes: C1GALT1 antibody at 4.4 μ g/ml. Secondary: Goat polyclonal to rabbit IgG at 1/50000 dilution. Predicted band size: 43, 36 kDa. Observed band size: 43 kDa.



IHC image of PACO58560 diluted at 1:1000 and staining in paraffin-embedded human kidney tissue performed on a Leica BondTM system. After dewaxing and hydration, antigen retrieval was mediated by high pressure in a citrate buffer (pH 6.0). Section was blocked with 10% normal goat serum 30min at RT. Then primary antibody (1% BSA) was incubated at 4°C overnight. The primary is detected by a biotinylated secondary antibody and visualized using an HRP conjugated SP system.



IHC image of PACO58560 diluted at 1:1000 and staining in paraffin-embedded human colon cancer performed on a Leica BondTM system. After dewaxing and hydration, antigen retrieval was mediated by high pressure in a citrate buffer (pH 6.0). Section was blocked with 10% normal goat serum 30min at RT. Then primary antibody (1% BSA) was incubated at 4°C overnight. The primary is detected by a biotinylated secondary antibody and visualized using an HRP conjugated SP system.