

HIST1H3A (Ab-122) Antibody



PACO58633

Product Information

Size:

50ul

Reactivity:

Human, Mouse, Rat

Source:

Rabbit

Isotype:

IgG

Applications:

ELISA, WB, IP

Recommended dilutions:

ELISA:1:2000-1:10000, WB:1:200-1:2000,
IP:1:200-1:2000

Protein Background:

Core component of nucleosome. Nucleosomes wrap and compact DNA into chromatin, limiting DNA accessibility to the cellular machineries which require DNA as a template. Histones thereby play a central role in transcription regulation, DNA repair, DNA replication and chromosomal stability. DNA accessibility is regulated via a complex set of post-translational modifications of histones, also called histone code, and nucleosome remodeling.

Gene ID:

HIST1H3A

Uniprot

P68431

Synonyms:

Histone H3.1 (Histone H3/a) (Histone H3/b) (Histone H3/c) (Histone H3/d) (Histone H3/f) (Histone H3/h) (Histone H3/i) (Histone H3/j) (Histone H3/k) (Histone H3/l), HIST1H3A; HIST1H3B; HIST1H3C; HIST1H3D; HIST1H3E; HIST1H3F; HIST1H3G; HIST1H3H; HIST1H3I; HIST1H3J, H3FA; H3FL; H3FC; H3FB; H3FD; H3FI; H3FH; H3FK; H3FF; H3FJ

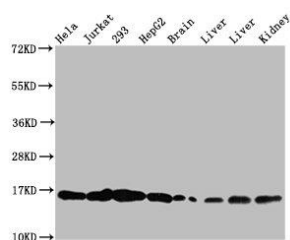
Immunogen:

Peptide sequence around site of Lys (122) derived from Human Histone H3.1.

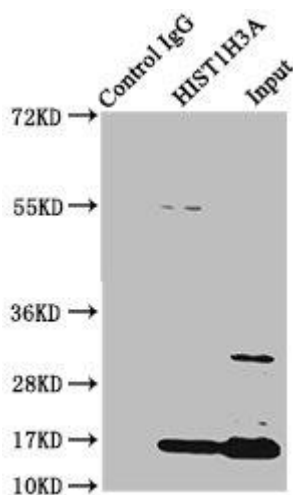
Storage:

Preservative: 0.03% Proclin 300. Constituents: 50% Glycerol, 0.01M PBS, pH 7.4

Product Images



Western Blot. Positive WB detected in: HeLa whole cell lysate, Jurkat whole cell lysate, 293 whole cell lysate, HepG2 whole cell lysate, Rat brain tissue, Rat liver tissue, Mouse liver tissue, Mouse kidney tissue. All lanes: HIST1H3A antibody at 0.37 μ g/ml. Secondary. Goat polyclonal to rabbit IgG at 1/50000 dilution. Predicted band size: 16 kDa. Observed band size: 16 kDa.



Immunoprecipitating HIST1H3A in HeLa whole cell lysate. Lane 1: Rabbit control IgG instead of PACO58633 in HeLa whole cell lysate. For western blotting, a HRP-conjugated Protein G antibody was used as the secondary antibody (1/2000). Lane 2: PACO58633 (5 μ g) + HeLa whole cell lysate (500 μ g). Lane 3: HeLa whole cell lysate (20 μ g).