

CDC123 Antibody



PACO58705

Product Information

Size:

50ug

Reactivity:

Human

Source:

Rabbit

Isotype:

IgG

Applications:

ELISA, IHC

Recommended dilutions:

ELISA:1:2000-1:10000, IHC:1:500-1:1000

Protein Background:

Required for S phase entry of the cell cycle.

Gene ID:

CDC123

Uniprot

O75794

Synonyms:

Cell division cycle protein 123 homolog (Protein D123) (HT-1080) (PZ32), CDC123, C10orf7 D123

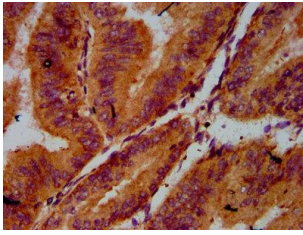
Immunogen:

Recombinant Human Cell division cycle protein 123 homolog protein (44-97AA).

Storage:

Preservative: 0.03% Proclin 300. Constituents: 50% Glycerol, 0.01M PBS, pH 7.4

Product Images



IHC image of PACO58705 diluted at 1:500 and staining in paraffin-embedded human endometrial cancer performed on a Leica Bond™ system. After dewaxing and hydration, antigen retrieval was mediated by high pressure in a citrate buffer (pH 6.0). Section was blocked with 10% normal goat serum 30min at RT. Then primary antibody (1% BSA) was incubated at 4°C overnight. The primary is detected by a biotinylated secondary antibody and visualized using an HRP conjugated SP system.