

PACO58781

---

## Product Information

**Size:**

50ug

**Reactivity:**

Human

**Source:**

Rabbit

**Isotype:**

IgG

**Applications:**

ELISA, IHC

**Recommended dilutions:**

ELISA:1:2000-1:10000, IHC:1:200-1:500

**Protein Background:**

During telencephalic development, causes ventralization of pallial progenitors and, depending on the developmental stage, specifies different neuronal fates. At early stages, necessary and sufficient to correctly specify the ventral lateral ganglionic eminence (LGE) and its major derivatives, the striatal projection neurons. At later stages, may specify LGE progenitors toward dorsal LGE fates, including olfactory bulb interneurons. Transcription factor that binds 5'-CNAATTAG-3' DNA sequence.

**Gene ID:**

GSX2

**Uniprot**

Q9BZM3

**Synonyms:**

GS homeobox 2 (Genetic-screened homeobox 2) (Homeobox protein GSH-2), GSX2, GSH2

**Immunogen:**

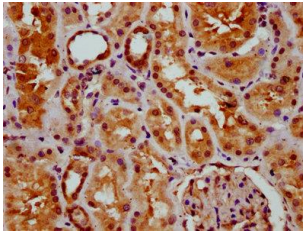
Recombinant Human GS homeobox 2 protein (15-118AA).

**Storage:**

Preservative: 0.03% Proclin 300. Constituents: 50% Glycerol, 0.01M PBS, pH 7.4

## Product Images

---



IHC image of PACO58781 diluted at 1:400 and staining in paraffin-embedded human kidney tissue performed on a Leica Bond™ system. After dewaxing and hydration, antigen retrieval was mediated by high pressure in a citrate buffer (pH 6.0). Section was blocked with 10% normal goat serum 30min at RT. Then primary antibody (1% BSA) was incubated at 4°C overnight. The primary is detected by a biotinylated secondary antibody and visualized using an HRP conjugated SP system.