

## Product Information

**Size:**

50ug

**Reactivity:**

Human

**Source:**

Rabbit

**Isotype:**

IgG

**Applications:**

ELISA, IHC

**Recommended dilutions:**

ELISA:1:2000-1:10000, IHC:1:200-1:500

**Protein Background:**

Has a neutrophil chemotactic activity. Also a positive regulator of chondrocyte proliferation. Does not show metalloendopeptidase activity.

**Gene ID:**

LECT2

**Uniprot**

O14960

**Synonyms:**

Leukocyte cell-derived chemotaxin-2 (LECT-2) (hLECT2), LECT2

**Immunogen:**

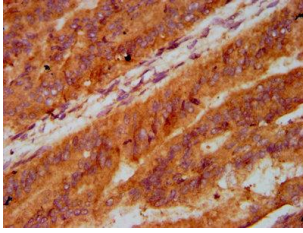
Recombinant Human Leukocyte cell-derived chemotaxin-2 protein (24-151AA).

**Storage:**

Preservative: 0.03% Proclin 300. Constituents: 50% Glycerol, 0.01M PBS, pH 7.4

## Product Images

---



IHC image of PACO58809 diluted at 1:400 and staining in paraffin-embedded human endometrial cancer performed on a Leica Bond™ system. After dewaxing and hydration, antigen retrieval was mediated by high pressure in a citrate buffer (pH 6.0). Section was blocked with 10% normal goat serum 30min at RT. Then primary antibody (1% BSA) was incubated at 4°C overnight. The primary is detected by a biotinylated secondary antibody and visualized using an HRP conjugated SP system.