

# RIN3 Antibody



PACO58869

---

## Product Information

**Size:**

50ug

**Reactivity:**

Human

**Source:**

Rabbit

**Isotype:**

IgG

**Applications:**

ELISA, IF

**Recommended dilutions:**

ELISA:1:2000-1:10000, IF:1:50-1:200

**Protein Background:**

Ras effector protein that functions as a guanine nucleotide exchange (GEF) for RAB5B and RAB31, by exchanging bound GDP for free GTP. Required for normal RAB31 function.

**Gene ID:**

RIN3

**Uniprot**

Q8TB24

**Synonyms:**

Ras and Rab interactor 3 (Ras interaction/interference protein 3), RIN3

**Immunogen:**

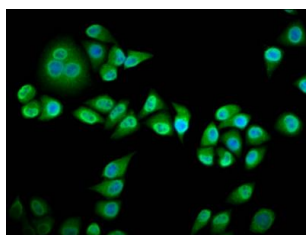
Recombinant Human Ras and Rab interactor 3 protein (245-465AA).

**Storage:**

Preservative: 0.03% Proclin 300. Constituents: 50% Glycerol, 0.01M PBS, pH 7.4

## Product Images

---



Immunofluorescence staining of HeLa cells with PACO58869 at 1:133, counter-stained with DAPI. The cells were fixed in 4% formaldehyde, permeabilized using 0.2% Triton X-100 and blocked in 10% normal Goat Serum. The cells were then incubated with the antibody overnight at 4°C. The secondary antibody was Alexa Fluor 488-conjugated AffiniPure Goat Anti-Rabbit IgG(H+L).