

PACO59105

---

## Product Information

**Size:**

50ug

**Reactivity:**

Rickettsia conorii

**Source:**

Rabbit

**Isotype:**

IgG

**Applications:**

ELISA, WB

**Recommended dilutions:**

ELISA:1:2000-1:10000, WB:1:500-1:5000

**Protein Background:**

Elicits protective immunity.

**Gene ID:**

ompA

**Uniprot**

Q52657

**Synonyms:**

Outer membrane protein A (190 kDa antigen) (Cell surface antigen) (rOmp A) (rOmpA) [Cleaved into: 120 kDa surface-exposed protein (120 kDa outer membrane protein OmpA); 32 kDa beta peptide], ompA

**Immunogen:**

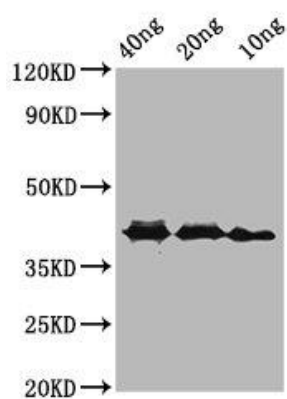
Recombinant Rickettsia conorii Outer membrane protein A protein (1734-2021AA).

**Storage:**

Preservative: 0.03% Proclin 300. Constituents: 50% Glycerol, 0.01M PBS, pH 7.4

## Product Images

---



Western Blot. Positive WB detected in Recombinant protein. All lanes: ompA antibody at 3.9 $\mu$ g/ml. Secondary. Goat polyclonal to rabbit IgG at 1/50000 dilution. Predicted band size: 42 kDa. Observed band size: 42 kDa.