

MAP3K21 Antibody



PACO59113

Product Information

Size:

50ug

Reactivity:

Human

Source:

Rabbit

Isotype:

IgG

Applications:

ELISA, WB

Recommended dilutions:

ELISA:1:2000-1:10000, WB:1:500-1:5000

Protein Background:

Negative regulator of TLR4 signaling. Does not activate JNK1/MAPK8 pathway, p38/MAPK14, nor ERK2/MAPK1 pathways.

Gene ID:

MAP3K21

Uniprot

Q5TCX8

Synonyms:

Mitogen-activated protein kinase kinase kinase 21 (EC 2.7.11.25) (Mitogen-activated protein kinase kinase kinase MLK4) (Mixed lineage kinase 4), MAP3K21, KIAA1804 MLK4

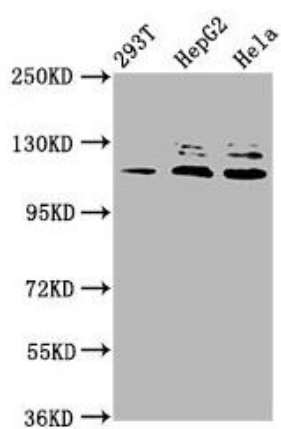
Immunogen:

Recombinant Human Mitogen-activated protein kinase kinase kinase 21 protein (640-794AA).

Storage:

Preservative: 0.03% Proclin 300. Constituents: 50% Glycerol, 0.01M PBS, pH 7.4

Product Images



Western Blot. Positive WB detected in: 293T whole cell lysate, HepG2 whole cell lysate, HeLa whole cell lysate. All lanes: MAP3K21 antibody at 3.3µg/ml. Secondary. Goat polyclonal to rabbit IgG at 1/50000 dilution. Predicted band size: 114, 64, 53 kDa. Observed band size: 114 kDa.