

PACO59197

Product Information

Size:

50ug

Reactivity:

Human

Source:

Rabbit

Isotype:

IgG

Applications:

ELISA, IF

Recommended dilutions:

ELISA:1:2000-1:10000, IF:1:200-1:500

Protein Background:

Acts as a scaffold protein, contributes to Rac-induced signal transduction such as JNKs (MAPK8 and MAPK9) activation and induces apoptosis. Within a signaling complex, it probably recruits protein kinases such as MAP3K10 or MAP3K11 which are in turn activated leading to the sequential activation of MAP2K4, MAP2K7 and JNKs (MAPK8 and MAPK9). May be involved in targeting of HIV-1 GAG and GAG-POL polyproteins to the plasma membrane.

Gene ID:

SH3RF1

Uniprot

Q7Z6J0

Synonyms:

E3 ubiquitin-protein ligase SH3RF1 (EC 2.3.2.27) (Plenty of SH3s) (Protein POSH) (RING finger protein 142) (RING-type E3 ubiquitin transferase SH3RF1) (SH3 domain-containing RING finger protein 1) (SH3 multiple domains protein 2), SH3RF1, KIAA1494 POSH RNF142 SH3MD2

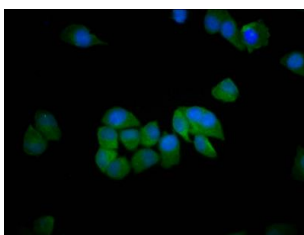
Immunogen:

Recombinant Human E3 ubiquitin-protein ligase SH3RF1 protein (628-742AA).

Storage:

Preservative: 0.03% Proclin 300. Constituents: 50% Glycerol, 0.01M PBS, pH 7.4

Product Images



Immunofluorescence staining of HeLa cells with PACO59197 at 1:200, counter-stained with DAPI. The cells were fixed in 4% formaldehyde, permeabilized using 0.2% Triton X-100 and blocked in 10% normal Goat Serum. The cells were then incubated with the antibody overnight at 4°C. The secondary antibody was Alexa Fluor 488-conjugated AffiniPure Goat Anti-Rabbit IgG(H+L).