

PACO59245

Product Information

Size:

50ug

Reactivity:

Human

Source:

Rabbit

Isotype:

IgG

Applications:

ELISA, WB, IHC

Recommended dilutions:

ELISA:1:2000-1:10000, WB:1:500-1:5000,
IHC:1:500-1:1000

Protein Background:

Catalyzes the reversible transamination between alanine and 2-oxoglutarate to form pyruvate and glutamate.

Gene ID:

GPT2

Uniprot

Q8TD30

Synonyms:

Alanine aminotransferase 2 (ALT2) (EC 2.6.1.2) (Glutamate pyruvate transaminase 2) (GPT 2) (Glutamic--alanine transaminase 2) (Glutamic--pyruvic transaminase 2), GPT2, AAT2 ALT2

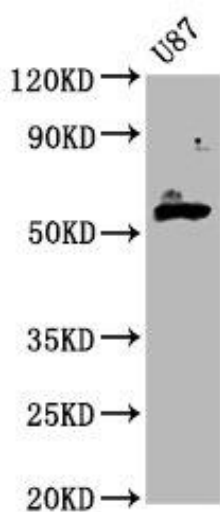
Immunogen:

Recombinant Human Alanine aminotransferase 2 protein (95-208AA).

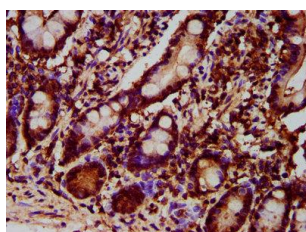
Storage:

Preservative: 0.03% Proclin 300. Constituents: 50% Glycerol, 0.01M PBS, pH 7.4

Product Images



Western Blot. Positive WB detected in: U87 whole cell lysate. All lanes: GPT2 antibody at 4.5 μ g/ml. Secondary. Goat polyclonal to rabbit IgG at 1/50000 dilution. Predicted band size: 58, 47 kDa. Observed band size: 58 kDa.



IHC image of PACO59245 diluted at 1:700 and staining in paraffin-embedded human small intestine tissue performed on a Leica BondTM system. After dewaxing and hydration, antigen retrieval was mediated by high pressure in a citrate buffer (pH 6.0). Section was blocked with 10% normal goat serum 30min at RT. Then primary antibody (1% BSA) was incubated at 4 $^{\circ}$ C overnight. The primary is detected by a biotinylated secondary antibody and visualized using an HRP conjugated SP system.