

# ALX4 Antibody



PACO59485

---

## Product Information

**Size:**

50ug

**Reactivity:**

Human, Rat

**Source:**

Rabbit

**Isotype:**

IgG

**Applications:**

ELISA, WB

**Recommended dilutions:**

ELISA:1:2000-1:10000, WB:1:500-1:5000

**Protein Background:**

Transcription factor involved in skull and limb development. Plays an essential role in craniofacial development, skin and hair follicle development.

**Gene ID:**

ALX4

**Uniprot**

Q9H161

**Synonyms:**

Homeobox protein aristaless-like 4, ALX4, KIAA1788

**Immunogen:**

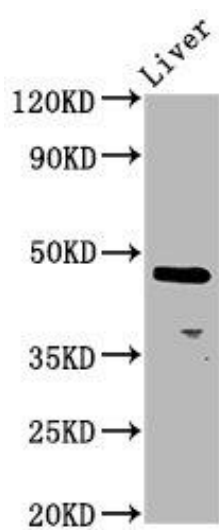
Recombinant Human Homeobox protein aristaless-like 4 protein (112-216AA).

**Storage:**

Preservative: 0.03% Proclin 300. Constituents: 50% Glycerol, 0.01M PBS, pH 7.4

## Product Images

---



Western Blot. Positive WB detected in: Rat liver tissue. All lanes: ALX4 antibody at 4.2 $\mu$ g/ml. Secondary. Goat polyclonal to rabbit IgG at 1/50000 dilution. Predicted band size: 45 kDa. Observed band size: 45 kDa.